



SYCM rabbit pAb

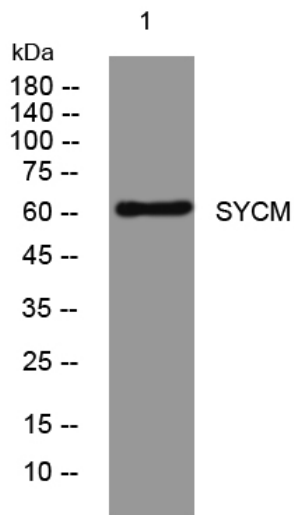
Catalog No	YP-Ab-08007
Isotype	IgG
Reactivity	Human; Mouse
Applications	WB
Gene Name	CARS2 OK/SW-cl.10
Protein Name	SYCM
Immunogen	Synthesized peptide derived from human SYCM AA range: 95-145
Specificity	This antibody detects endogenous levels of SYCM at Human/Mouse
Formulation	Liquid in PBS containing 50% glycerol, 0.5% BSA and 0.121% sodium azide.
Source	Polyclonal, Rabbit,IgG
Purification	The antibody was affinity-purified from rabbit serum by affinity-chromatography using specific immunogen.
Dilution	WB 1:500-2000
Concentration	1 mg/ml
Purity	≥90%
Storage Stability	-20°C/1 year
Synonyms	Probable cysteine--tRNA ligase, mitochondrial (EC 6.1.1.16) (CysteinyI-tRNA synthetase) (CysRS)
Observed Band	60kD
Cell Pathway	Mitochondrion matrix .
Tissue Specificity	Colon adenocarcinoma,Lung,Lymph node,Mammary gland,Salivary gland,Testis,
Function	catalytic activity:ATP + L-cysteine + tRNA(Cys) = AMP + diphosphate + L-cysteinyI-tRNA(Cys).,cofactor:Binds 1 zinc ion per subunit.,similarity:Belongs to the class-I aminoacyI-tRNA synthetase family.,
Background	This gene encodes a putative member of the class I family of aminoacyI-tRNA synthetases. These enzymes play a critical role in protein biosynthesis by charging tRNAs with their cognate amino acids. This protein is encoded by the nuclear genome but is likely to be imported to the mitochondrion where it is thought to catalyze the ligation of cysteine to tRNA molecules. A splice-site mutation in this gene has been associated with a novel progressive myoclonic epilepsy disease with similar symptoms to MERRF syndrome. [provided by RefSeq, Mar 2015],
matters needing attention	Avoid repeated freezing and thawing!



Usage suggestions

This product can be used in immunological reaction related experiments. For more information, please consult technical personnel.

Products Images



Western blot analysis of lysates from 3T3 cells, primary antibody was diluted at 1:1000, 4° over night