



MCLN2 rabbit pAb

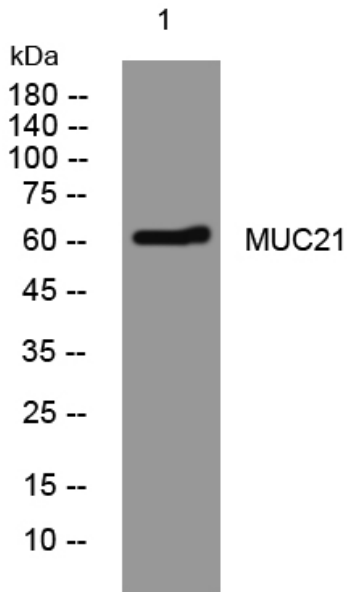
Catalog No	YP-Ab-08020
Isotype	IgG
Reactivity	Human; Mouse
Applications	WB
Gene Name	MCOLN2
Protein Name	MCLN2
Immunogen	Synthesized peptide derived from human MCLN2 AA range: 328-378
Specificity	This antibody detects endogenous levels of MCLN2 at Human/Mouse
Formulation	Liquid in PBS containing 50% glycerol, 0.5% BSA and 0.134% sodium azide.
Source	Polyclonal, Rabbit,IgG
Purification	The antibody was affinity-purified from rabbit serum by affinity-chromatography using specific immunogen.
Dilution	WB 1:500-2000
Concentration	1 mg/ml
Purity	≥90%
Storage Stability	-20°C/1 year
Synonyms	Mucolipin-2
Observed Band	60kD
Cell Pathway	Cell membrane ; Multi-pass membrane protein . Late endosome membrane ; Multi-pass membrane protein . Lysosome membrane ; Multi-pass membrane protein . Recycling endosome membrane ; Multi-pass membrane protein . Localizes to recycling endosomes in activated macrophages and microglia .
Tissue Specificity	Uterus,
Function	sequence caution:Translated as Trp.,similarity:Belongs to the transient receptor family. Polycystin subfamily.,
Background	Mucolipins constitute a family of cation channel proteins with homology to the transient receptor potential superfamily. In mammals, the mucolipin family includes 3 members, MCOLN1 (MIM 605248), MCOLN2, and MCOLN3 (MIM 607400), that exhibit a common 6-membrane-spanning topology. Homologs of mammalian mucolipins exist in Drosophila and C. elegans. Mutations in the human MCOLN1 gene cause mucolipodosis IV (MIM 262650) (Karacsonyi et al., 2007 [PubMed 17662026]).[supplied by OMIM, Sep 2009],
matters needing attention	Avoid repeated freezing and thawing!



Usage suggestions

This product can be used in immunological reaction related experiments. For more information, please consult technical personnel.

Products Images



Western blot analysis of lysates from HpeG2 cells, primary antibody was diluted at 1:1000, 4° over night