

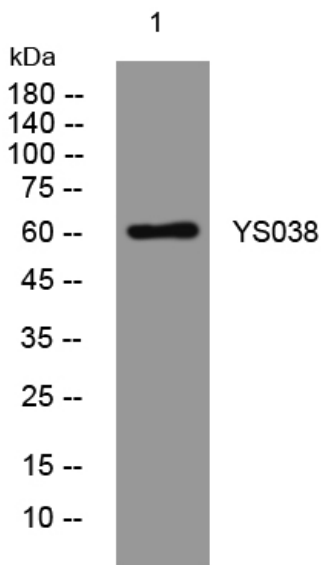


YS038 rabbit pAb

Catalog No	YP-Ab-08036
Isotype	IgG
Reactivity	Human;Rat;Mouse;
Applications	WB
Gene Name	
Protein Name	YS038
Immunogen	Synthesized peptide derived from human YS038 AA range: 195-245
Specificity	This antibody detects endogenous levels of YS038 at Human
Formulation	Liquid in PBS containing 50% glycerol, 0.5% BSA and 0.150% sodium azide.
Source	Polyclonal, Rabbit,IgG
Purification	The antibody was affinity-purified from rabbit serum by affinity-chromatography using specific immunogen.
Dilution	WB 1:500-2000
Concentration	1 mg/ml
Purity	≥90%
Storage Stability	-20°C/1 year
Synonyms	Putative uncharacterized protein DKFZp434G1729
Observed Band	60kD
Cell Pathway	
Tissue Specificity	
Function	
Background	
matters needing attention	Avoid repeated freezing and thawing!
Usage suggestions	This product can be used in immunological reaction related experiments. For more information, please consult technical personnel.



Products Images



Western blot analysis of lysates from VEC cells,
primary antibody was diluted at 1:1000, 4° over night