

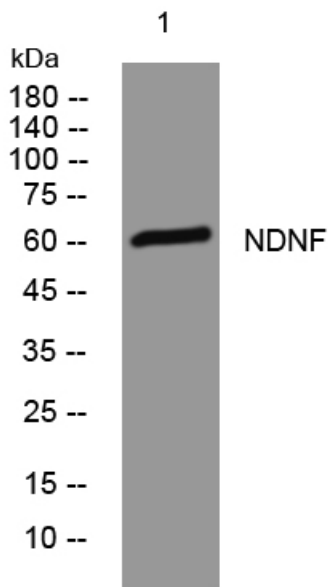


## NDNF rabbit pAb

|                                  |  |
|----------------------------------|--|
| <b>Catalog No</b>                | YP-Ab-08041  |
| <b>Isotype</b>                   | IgG  |
| <b>Reactivity</b>                | Human; Mouse   |
| <b>Applications</b>              | WB   |
| <b>Gene Name</b>                 | NDNF C4orf31 UNQ2748/PRO6487   |
| <b>Protein Name</b>              | NDNF   |
| <b>Immunogen</b>                 | Synthesized peptide derived from human NDNF AA range: 75-125   |
| <b>Specificity</b>               | This antibody detects endogenous levels of NDNF at Human/Mouse   |
| <b>Formulation</b>               | Liquid in PBS containing 50% glycerol, 0.5% BSA and 0.155% sodium azide.   |
| <b>Source</b>                    | Polyclonal, Rabbit,IgG   |
| <b>Purification</b>              | The antibody was affinity-purified from rabbit serum by affinity-chromatography using specific immunogen.  |
| <b>Dilution</b>                  | WB 1:500-2000  |
| <b>Concentration</b>             | 1 mg/ml  |
| <b>Purity</b>                    | ≥90%   |
| <b>Storage Stability</b>         | -20°C/1 year   |
| <b>Synonyms</b>                  | Protein NDNF (Neuron-derived neurotrophic factor)  |
| <b>Observed Band</b>             | 60kD   |
| <b>Cell Pathway</b>              | Secreted .   |
| <b>Tissue Specificity</b>        | Expressed in neurons along the gonadotropin-releasing hormone (GnRH) expressing neurons migratory route.   |
| <b>Function</b>                  | function:Promotes matrix assembly and cell adhesiveness.,PTM:O-glycosylated; contains heparan sulfate and chondroitin sulfate.,sequence caution: Translation N-terminally extended.,similarity:Contains 2 fibronectin type-III domains.,subunit: Binds heparin and chondroitin sulfate., |
| <b>Background</b>                |  |
| <b>matters needing attention</b> | Avoid repeated freezing and thawing!   |
| <b>Usage suggestions</b>         | This product can be used in immunological reaction related experiments. For more information, please consult technical personnel.  |



## Products Images



Western blot analysis of lysates from DU145 cells,  
primary antibody was diluted at 1:1000, 4° over night