

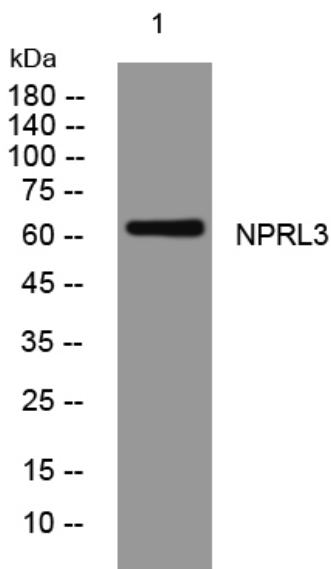


## NPRL3 rabbit pAb

<b>Catalog No</b>	YP-Ab-08056
<b>Isotype</b>	IgG
<b>Reactivity</b>	Human; Mouse
<b>Applications</b>	WB
<b>Gene Name</b>	NPRL3 C16orf35 CGTHBA MARE
<b>Protein Name</b>	NPRL3
<b>Immunogen</b>	Synthesized peptide derived from human NPRL3 AA range: 461-511
<b>Specificity</b>	This antibody detects endogenous levels of NPRL3 at Human/Mouse
<b>Formulation</b>	Liquid in PBS containing 50% glycerol, 0.5% BSA and 0.170% sodium azide.
<b>Source</b>	Polyclonal, Rabbit,IgG
<b>Purification</b>	The antibody was affinity-purified from rabbit serum by affinity-chromatography using specific immunogen.
<b>Dilution</b>	WB 1:500-2000
<b>Concentration</b>	1 mg/ml
<b>Purity</b>	≥90%
<b>Storage Stability</b>	-20°C/1 year
<b>Synonyms</b>	Nitrogen permease regulator 3-like protein (-14 gene protein) (Alpha-globin regulatory element-containing gene protein) (Protein CGTHBA)
<b>Observed Band</b>	60kD
<b>Cell Pathway</b>	Lysosome membrane . Localization to lysosomes is amino acid-independent. .
<b>Tissue Specificity</b>	Widely expressed. Expressed in the frontal lobe cortex as well as in the temporal, parietal, and occipital lobes (PubMed:27173016, PubMed:26505888).
<b>Function</b>	caution:Ser-489 is missing in the human genome assembly but is present in all available mRNAs and ESTs.,similarity:Belongs to the UPF0171 family.,tissue specificity:Widely expressed.,
<b>Background</b>	The function of the encoded protein is not known. [provided by RefSeq, Aug 2011],
<b>matters needing attention</b>	Avoid repeated freezing and thawing!
<b>Usage suggestions</b>	This product can be used in immunological reaction related experiments. For more information, please consult technical personnel.



## Products Images



Western blot analysis of lysates from 3T3 cells, primary antibody was diluted at 1:1000, 4° over night