



DPYL3 rabbit pAb

Catalog No	YP-Ab-08064
Isotype	IgG
Reactivity	Human; Mouse;Rat
Applications	WB
Gene Name	DPYSL3 CRMP4 DRP3 ULIP ULIP1
Protein Name	DPYL3
Immunogen	Synthesized peptide derived from human DPYL3 AA range: 240-290
Specificity	This antibody detects endogenous levels of DPYL3 at Human/Mouse/Rat
Formulation	Liquid in PBS containing 50% glycerol, 0.5% BSA and 0.179% sodium azide.
Source	Polyclonal, Rabbit,IgG
Purification	The antibody was affinity-purified from rabbit serum by affinity-chromatography using specific immunogen.
Dilution	WB 1:500-2000
Concentration	1 mg/ml
Purity	≥90%
Storage Stability	-20°C/1 year
Synonyms	Dihydropyrimidinase-related protein 3 (DRP-3) (Collapsin response mediator protein 4) (CRMP-4) (Unc-33-like phosphoprotein 1) (ULIP-1)
Observed Band	65kD
Cell Pathway	Cytoplasm . Cell projection, growth cone . Colocalizes with synaptic vesicle protein 2 in the central region of the growth cone. .
Tissue Specificity	Mainly expressed in heart and skeletal muscle. Also strongly expressed in fetal brain and spinal cord.
Function	function:Necessary for signaling by class 3 semaphorins and subsequent remodeling of the cytoskeleton. Plays a role in axon guidance, neuronal growth cone collapse and cell migration.,similarity:Belongs to the DHOase family. Hydantoinase/dihydropyrimidinase subfamily.,subcellular location:Colocalizes with synaptic vesicle protein 2 in the central region of the growth cone.,subunit:Homotetramer, and heterotetramer with CRMP1, DPYSL2, DPYSL4 or DPYSL5 (By similarity). Interacts with synaptic vesicle protein 2 and SH3A domain of intersectin.,tissue specificity:Mainly in heart and skeletal muscle. Also expressed strongly in fetal brain and spinal cord.,

Background



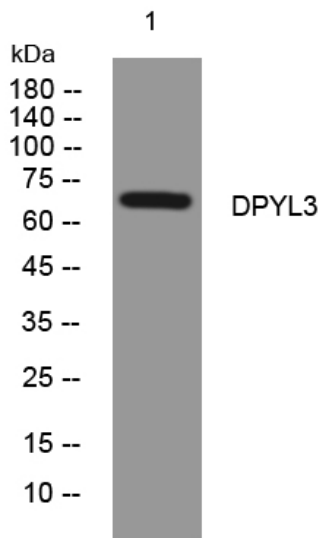
matters needing attention

Avoid repeated freezing and thawing!

Usage suggestions

This product can be used in immunological reaction related experiments. For more information, please consult technical personnel.

Products Images



Western blot analysis of lysates from MDA-MB cells, primary antibody was diluted at 1:1000, 4° over night