



# FKBP9 rabbit pAb

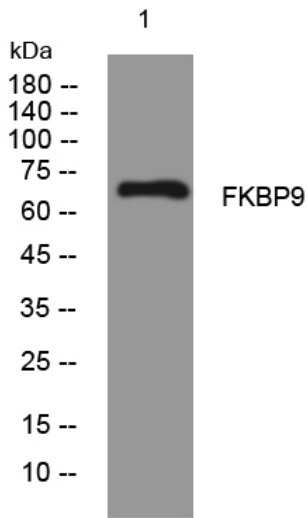
<b>Catalog No</b>	YP-Ab-08066
<b>Isotype</b>	IgG
<b>Reactivity</b>	Human; Mouse;Rat
<b>Applications</b>	WB
<b>Gene Name</b>	FKBP9 FKBP60 FKBP63
<b>Protein Name</b>	FKBP9
<b>Immunogen</b>	Synthesized peptide derived from human FKBP9 AA range: 362-412
<b>Specificity</b>	This antibody detects endogenous levels of FKBP9 at Human/Mouse/Rat
<b>Formulation</b>	Liquid in PBS containing 50% glycerol, 0.5% BSA and 0.181% sodium azide.
<b>Source</b>	Polyclonal, Rabbit,IgG
<b>Purification</b>	The antibody was affinity-purified from rabbit serum by affinity-chromatography using specific immunogen.
<b>Dilution</b>	WB 1:500-2000
<b>Concentration</b>	1 mg/ml
<b>Purity</b>	≥90%
<b>Storage Stability</b>	-20°C/1 year
<b>Synonyms</b>	Peptidyl-prolyl cis-trans isomerase FKBP9 (PPIase FKBP9) (EC 5.2.1.8) (63 kDa FK506-binding protein) (63 kDa FKBP) (FKBP-63) (FK506-binding protein 9) (FKBP-9) (Rotamase)
<b>Observed Band</b>	65kD
<b>Cell Pathway</b>	Endoplasmic reticulum .
<b>Tissue Specificity</b>	Brain,Breast,Kidney,Liver,Lung,PNS,Trachea,
<b>Function</b>	catalytic activity:Peptidylproline (omega=180) = peptidylproline (omega=0).,enzyme regulation:Inhibited by FK506.,function:PPIases accelerate the folding of proteins during protein synthesis.,PTM:Phosphorylated.,similarity:Belongs to the FKBP-type PPIase family.,similarity:Contains 2 EF-hand domains.,similarity:Contains 4 PPIase FKBP-type domains.,
<b>Background</b>	
<b>matters needing attention</b>	Avoid repeated freezing and thawing!



**Usage suggestions**

This product can be used in immunological reaction related experiments. For more information, please consult technical personnel.

**Products Images**



Western blot analysis of lysates from SW480 cells, primary antibody was diluted at 1:1000, 4° over night