



S47A1 rabbit pAb

Catalog No	YP-Ab-08071
Isotype	IgG
Reactivity	Human; Mouse;Rat
Applications	WB
Gene Name	SLC47A1 MATE1
Protein Name	S47A1
Immunogen	Synthesized peptide derived from human S47A1 AA range: 158-208
Specificity	This antibody detects endogenous levels of S47A1 at Human/Mouse/Rat
Formulation	Liquid in PBS containing 50% glycerol, 0.5% BSA and 0.186% sodium azide.
Source	Polyclonal, Rabbit,IgG
Purification	The antibody was affinity-purified from rabbit serum by affinity-chromatography using specific immunogen.
Dilution	WB 1:500-2000
Concentration	1 mg/ml
Purity	≥90%
Storage Stability	-20°C/1 year
Synonyms	Multidrug and toxin extrusion protein 1 (MATE-1) (hMATE-1) (Solute carrier family 47 member 1)
Observed Band	65kD
Cell Pathway	Cell membrane ; Multi-pass membrane protein . Predominantly localized at the plasma membrane but also found in intracellular organelles.
Tissue Specificity	Expressed in adrenal gland, and to a lower extent in liver, skeletal muscle and kidney (especially found in luminal membranes of the urinary tubules, bile caniculi and brush border membranes).
Function	function:Solute transporter for tetraethylammonium (TEA), 1-methyl-4-phenylpyridinium (MPP), cimetidine, N-methylnicotinamide (NMN), metformin, creatinine, guanidine, procainamide, topotecan, estrone sulfate, acyclovir, ganciclovir and also the zwitterionic cephalosporin, cephalixin and cephradine. Seems to also play a role in the uptake of oxaliplatin (a new platinum anticancer agent). Able to transport paraquat (PQ or N,N-dimethyl-4,4'-bipyridinium); a widely used herbicide. Responsible for the secretion of cationic drugs across the brush border membranes.,similarity:Belongs to the multi antimicrobial extrusion (MATE) (TC 2.A.66.1) family.,subcellular location:Predominantly localized at the plasma membrane but also found in intracellular organelles.,tissue specificity:Expressed in adrenal gland, and to a lower extent in liver, skeletal muscle and kidney (especially found in luminal membr



Background

This gene is located within the Smith-Magenis syndrome region on chromosome 17. It encodes a protein of unknown function. [provided by RefSeq, Jul 2008],

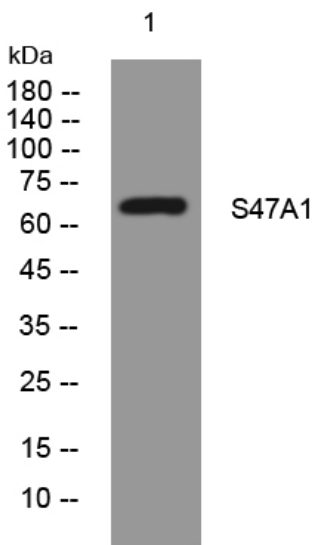
matters needing attention

Avoid repeated freezing and thawing!

Usage suggestions

This product can be used in immunological reaction related experiments. For more information, please consult technical personnel.

Products Images



Western blot analysis of lysates from SH-SY5Y cells, primary antibody was diluted at 1:1000, 4° over night