



VPS45 rabbit pAb

| | |
|---------------------------|---|
| Catalog No | YP-Ab-08073 |
| Isotype | IgG |
| Reactivity | Human; Mouse;Rat |
| Applications | WB |
| Gene Name | VPS45 VPS45A VPS45B |
| Protein Name | VPS45 |
| Immunogen | Synthesized peptide derived from human VPS45 AA range: 470-520 |
| Specificity | This antibody detects endogenous levels of VPS45 at Human/Mouse/Rat |
| Formulation | Liquid in PBS containing 50% glycerol, 0.5% BSA and 0.188% sodium azide. |
| Source | Polyclonal, Rabbit,IgG |
| Purification | The antibody was affinity-purified from rabbit serum by affinity-chromatography using specific immunogen. |
| Dilution | WB 1:500-2000 |
| Concentration | 1 mg/ml |
| Purity | ≥90% |
| Storage Stability | -20°C/1 year |
| Synonyms | Vacuolar protein sorting-associated protein 45 (h-VPS45) (hVps45) |
| Observed Band | 65kD |
| Cell Pathway | Golgi apparatus membrane ; Peripheral membrane protein . Endosome membrane ; Peripheral membrane protein . Associated with Golgi/endosomal vesicles and the trans-Golgi network. . |
| Tissue Specificity | Ubiquitous. Expression was highest in testis, heart and brain, intermediate in kidney, spleen, prostate, ovary, small intestine and thymus and low in lung, skeletal muscle, placenta, colon, pancreas, peripheral blood leukocytes and liver. |
| Function | function:May play a role in vesicle-mediated protein trafficking from the Golgi stack through the trans-Golgi network.,similarity:Belongs to the STXBP/unc-18/SEC1 family.,subcellular location:Associated with Golgi/endosomal vesicles and the trans-Golgi network.,subunit:Interacts with STX6 (By similarity). Interacts with ZFYVE20.,tissue specificity:Ubiquitous. Expression was highest in testis, heart and brain, intermediate in kidney, spleen, prostate, ovary, small intestine and thymus and low in lung, skeletal muscle, placenta, colon, pancreas, peripheral blood leukocytes and liver., |
| Background | Vesicle mediated protein sorting plays an important role in segregation of intracellular molecules into distinct organelles. Genetic studies in yeast have identified more than 40 vacuolar protein sorting (VPS) genes involved in vesicle transport to vacuoles. This gene is a member of the Sec1 domain family, and shows a high degree of sequence similarity to mouse, rat and yeast Vps45. The |



exact function of this gene is not known, but its high expression in peripheral blood mononuclear cells suggests a role in trafficking proteins, including inflammatory mediators. Multiple alternatively spliced transcript variants have been found for this gene. [provided by RefSeq, Jul 2013],

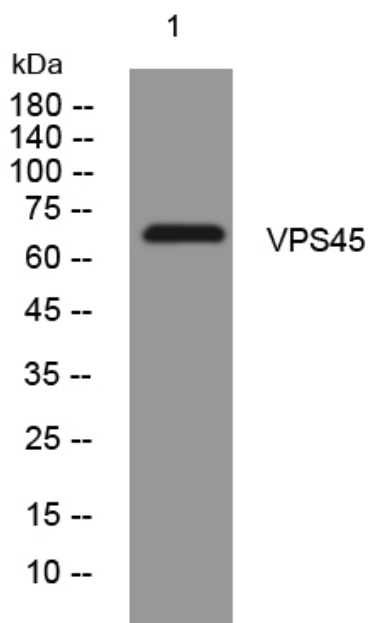
matters needing attention

Avoid repeated freezing and thawing!

Usage suggestions

This product can be used in immunological reaction related experiments. For more information, please consult technical personnel.

Products Images



Western blot analysis of lysates from HpeG2 cells, primary antibody was diluted at 1:1000, 4° over night