



# CCD66 rabbit pAb

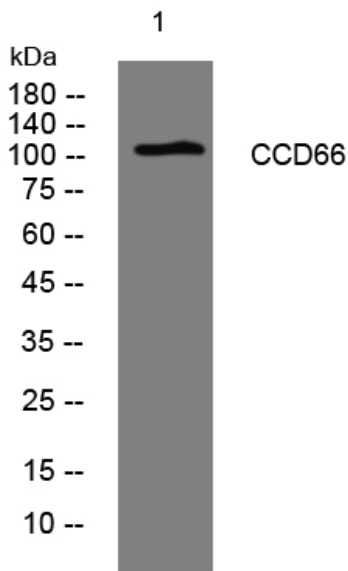
<b>Catalog No</b>	YP-Ab-08082
<b>Isotype</b>	IgG
<b>Reactivity</b>	Human; Mouse
<b>Applications</b>	WB
<b>Gene Name</b>	CCDC66
<b>Protein Name</b>	CCD66
<b>Immunogen</b>	Synthesized peptide derived from human CCD66 AA range: 151-201
<b>Specificity</b>	This antibody detects endogenous levels of CCD66 at Human/Mouse
<b>Formulation</b>	Liquid in PBS containing 50% glycerol, 0.5% BSA and 0.197% sodium azide.
<b>Source</b>	Polyclonal, Rabbit,IgG
<b>Purification</b>	The antibody was affinity-purified from rabbit serum by affinity-chromatography using specific immunogen.
<b>Dilution</b>	WB 1:500-2000
<b>Concentration</b>	1 mg/ml
<b>Purity</b>	≥90%
<b>Storage Stability</b>	-20°C/1 year
<b>Synonyms</b>	Coiled-coil domain-containing protein 66
<b>Observed Band</b>	105kD
<b>Cell Pathway</b>	Cytoplasm, cytoskeleton, microtubule organizing center, centrosome . Cytoplasm, cytoskeleton, microtubule organizing center, centrosome, centriolar satellite . Cell projection, cilium . Cytoplasm, cytoskeleton, cilium basal body . Photoreceptor inner segment . Cell projection, cilium, photoreceptor outer segment . Restricted to the centrosomes and the spindle microtubules during mitosis (PubMed:28235840). Enriched in the inner segment of the photoreceptor (PubMed:19777273). .
<b>Tissue Specificity</b>	Widely expressed (at protein level) (PubMed:28235840). Expressed in retina, mainly in photoreceptors but also in outer plexiform and ganglion cell layers (at protein level) (PubMed:19777273).
<b>Function</b>	
<b>Background</b>	
<b>matters needing attention</b>	Avoid repeated freezing and thawing!



**Usage suggestions**

This product can be used in immunological reaction related experiments. For more information, please consult technical personnel.

**Products Images**



Western blot analysis of lysates from HeLa cells, primary antibody was diluted at 1:1000, 4° over night