

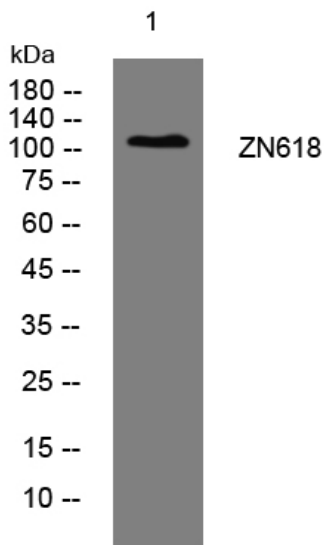


## ZN618 rabbit pAb

|                                  |   |
|----------------------------------|---|
| <b>Catalog No</b>                | YP-Ab-08116   |
| <b>Isotype</b>                   | IgG   |
| <b>Reactivity</b>                | Human; Mouse  |
| <b>Applications</b>              | WB  |
| <b>Gene Name</b>                 | ZNF618 KIAA1952   |
| <b>Protein Name</b>              | ZN618   |
| <b>Immunogen</b>                 | Synthesized peptide derived from human ZN618 AA range: 109-159  |
| <b>Specificity</b>               | This antibody detects endogenous levels of ZN618 at Human/Mouse   |
| <b>Formulation</b>               | Liquid in PBS containing 50% glycerol, 0.5% BSA and 0.231% sodium azide.  |
| <b>Source</b>                    | Polyclonal, Rabbit,IgG  |
| <b>Purification</b>              | The antibody was affinity-purified from rabbit serum by affinity-chromatography using specific immunogen.   |
| <b>Dilution</b>                  | WB 1:500-2000   |
| <b>Concentration</b>             | 1 mg/ml   |
| <b>Purity</b>                    | ≥90%  |
| <b>Storage Stability</b>         | -20°C/1 year  |
| <b>Synonyms</b>                  | Zinc finger protein 618   |
| <b>Observed Band</b>             | 105kD   |
| <b>Cell Pathway</b>              | Nucleus . Chromosome . Localizes at genomic loci that are enriched for 5-hydroxymethylcytosine (5hmC). .  |
| <b>Tissue Specificity</b>        | Amygdala,Brain,Eye,Kidney,Testis,   |
| <b>Function</b>                  | function:May be involved in transcriptional regulation.,sequence caution:Translated as Glu.,similarity:Belongs to the krueppel C2H2-type zinc-finger protein family.,similarity:Contains 4 C2H2-type zinc fingers., |
| <b>Background</b>                |   |
| <b>matters needing attention</b> | Avoid repeated freezing and thawing!  |
| <b>Usage suggestions</b>         | This product can be used in immunological reaction related experiments. For more information, please consult technical personnel.   |



## Products Images



Western blot analysis of lysates from MCF-7 cells,  
primary antibody was diluted at 1:1000, 4° over night