



## CSTN2 rabbit pAb

<b>Catalog No</b>	YP-Ab-08120
<b>Isotype</b>	IgG
<b>Reactivity</b>	Human; Mouse;Rat
<b>Applications</b>	WB
<b>Gene Name</b>	CLSTN2 CS2
<b>Protein Name</b>	CSTN2
<b>Immunogen</b>	Synthesized peptide derived from human CSTN2 AA range: 494-544
<b>Specificity</b>	This antibody detects endogenous levels of CSTN2 at Human/Mouse/Rat
<b>Formulation</b>	Liquid in PBS containing 50% glycerol, 0.5% BSA and 0.235% sodium azide.
<b>Source</b>	Polyclonal, Rabbit,IgG
<b>Purification</b>	The antibody was affinity-purified from rabbit serum by affinity-chromatography using specific immunogen.
<b>Dilution</b>	WB 1:500-2000
<b>Concentration</b>	1 mg/ml
<b>Purity</b>	≥90%
<b>Storage Stability</b>	-20°C/1 year
<b>Synonyms</b>	Calsyntenin-2 (Alcadein-gamma) (Alc-gamma)
<b>Observed Band</b>	105kD
<b>Cell Pathway</b>	Cell membrane ; Single-pass type I membrane protein . Endoplasmic reticulum membrane . Golgi apparatus membrane . Cell junction, synapse, postsynapse . Cell projection, dendrite . Most prominent in the postsynaptic specializations of asymmetric (type I) synapses with both axodendritic and axospinous localization. .
<b>Tissue Specificity</b>	Restricted to the brain.
<b>Function</b>	domain: Binds synaptic Ca(2+) with its cytoplasmic domain.,function: May modulate calcium-mediated postsynaptic signals.,PTM: Proteolytically processed under normal cellular conditions. A primary zeta-cleavage generates a large extracellular (soluble) N-terminal domain (sAlc) and a short C-terminal transmembrane fragment (CTF1). A secondary cleavage catalyzed by gamma-secretase within the transmembrane domain releases the beta-Alc-gamma chain in the extracellular milieu and produces an intracellular fragment (AlcICD). This processing is strongly suppressed in the tripartite complex formed with APBA2 and APP, which seems to prevent the association with PSEN1.,similarity: Contains 2 cadherin domains.,subcellular location: Most prominent in the postsynaptic specializations of asymmetric (type I) synapses with both axodendritic and axospinous localization.,tissue specificity: Restricted to the bra



## Background

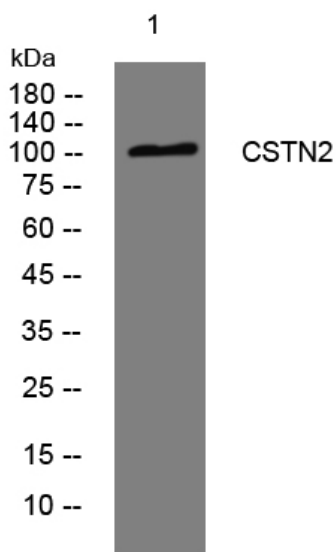
### matters needing attention

Avoid repeated freezing and thawing!

### Usage suggestions

This product can be used in immunological reaction related experiments. For more information, please consult technical personnel.

## Products Images



Western blot analysis of lysates from 293T cells,  
primary antibody was diluted at 1:1000, 4° over night