

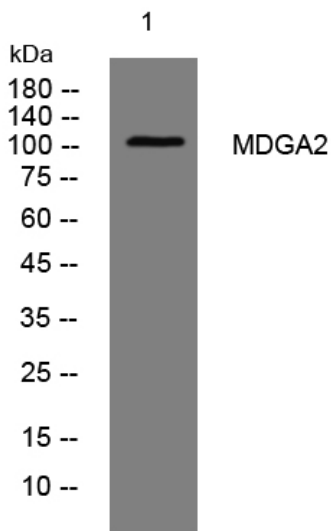


## MDGA2 rabbit pAb

<b>Catalog No</b>	YP-Ab-08125
<b>Isotype</b>	IgG
<b>Reactivity</b>	Human; Mouse;Rat
<b>Applications</b>	WB
<b>Gene Name</b>	MDGA2 MAMDC1 UNQ8188/PRO23197
<b>Protein Name</b>	MDGA2
<b>Immunogen</b>	Synthesized peptide derived from human MDGA2 AA range: 726-776
<b>Specificity</b>	This antibody detects endogenous levels of MDGA2 at Human/Mouse/Rat
<b>Formulation</b>	Liquid in PBS containing 50% glycerol, 0.5% BSA and 0.240% sodium azide.
<b>Source</b>	Polyclonal, Rabbit,IgG
<b>Purification</b>	The antibody was affinity-purified from rabbit serum by affinity-chromatography using specific immunogen.
<b>Dilution</b>	WB 1:500-2000
<b>Concentration</b>	1 mg/ml
<b>Purity</b>	≥90%
<b>Storage Stability</b>	-20°C/1 year
<b>Synonyms</b>	MAM domain-containing glycosylphosphatidylinositol anchor protein 2 (MAM domain-containing protein 1)
<b>Observed Band</b>	105kD
<b>Cell Pathway</b>	Cell membrane ; Lipid-anchor, GPI-anchor .
<b>Tissue Specificity</b>	Detected in Leydig cells, syncytiotrophoblast, duodenal villi epithelial cells and neutrophils from kidney and cutaneous squamous cell carcinoma (at protein level).
<b>Function</b>	caution:The sequence shown here is derived from an Ensembl automatic analysis pipeline and should be considered as preliminary data.,function:May involved in cell-cell interactions.,similarity:Contains 1 MAM domain.,similarity:Contains 6 Ig-like (immunoglobulin-like) domains.,
<b>Background</b>	
<b>matters needing attention</b>	Avoid repeated freezing and thawing!
<b>Usage suggestions</b>	This product can be used in immunological reaction related experiments. For more information, please consult technical personnel.



## Products Images



Western blot analysis of lysates from U2OS cells,  
primary antibody was diluted at 1:1000, 4° over night