

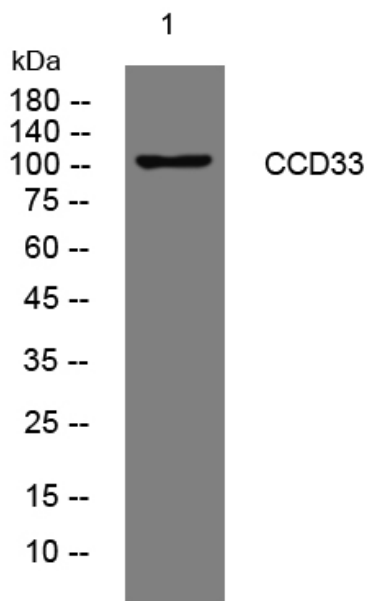


CCD33 rabbit pAb

Catalog No	YP-Ab-08133
Isotype	IgG
Reactivity	Human; Mouse;Rat
Applications	WB
Gene Name	CCDC33
Protein Name	CCD33
Immunogen	Synthesized peptide derived from human CCD33 AA range: 484-534
Specificity	This antibody detects endogenous levels of CCD33 at Human/Mouse/Rat
Formulation	Liquid in PBS containing 50% glycerol, 0.5% BSA and 0.248% sodium azide.
Source	Polyclonal, Rabbit,IgG
Purification	The antibody was affinity-purified from rabbit serum by affinity-chromatography using specific immunogen.
Dilution	WB 1:500-2000
Concentration	1 mg/ml
Purity	≥90%
Storage Stability	-20°C/1 year
Synonyms	Coiled-coil domain-containing protein 33 (Cancer/testis antigen 61) (CT61)
Observed Band	105kD
Cell Pathway	
Tissue Specificity	Brain,Lung,Testis,
Function	similarity:Contains 1 C2 domain.,
Background	
matters needing attention	Avoid repeated freezing and thawing!
Usage suggestions	This product can be used in immunological reaction related experiments. For more information, please consult technical personnel.



Products Images



Western blot analysis of lysates from VEC cells,
primary antibody was diluted at 1:1000, 4° over night