

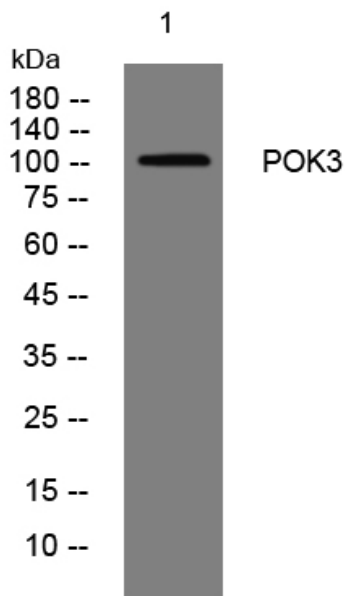


POK3 rabbit pAb

Catalog No	YP-Ab-08137
Isotype	IgG
Reactivity	Human;Rat;Mouse;
Applications	WB
Gene Name	ERVK6
Protein Name	POK3
Immunogen	Synthesized peptide derived from human POK3 AA range: 813-863
Specificity	This antibody detects endogenous levels of POK3 at Human
Formulation	Liquid in PBS containing 50% glycerol, 0.5% BSA and 0.252% sodium azide.
Source	Polyclonal, Rabbit,IgG
Purification	The antibody was affinity-purified from rabbit serum by affinity-chromatography using specific immunogen.
Dilution	WB 1:500-2000
Concentration	1 mg/ml
Purity	≥90%
Storage Stability	-20°C/1 year
Synonyms	HERV-K_19q12 provirus ancestral Pol protein (HERV-K(C19) Pol protein) [Includes: Reverse transcriptase (RT) (EC 2.7.7.49); Ribonuclease H (RNase H) (EC 3.1.26.4); Integrase (IN)]
Observed Band	105kD
Cell Pathway	
Tissue Specificity	
Function	
Background	
matters needing attention	Avoid repeated freezing and thawing!
Usage suggestions	This product can be used in immunological reaction related experiments. For more information, please consult technical personnel.



Products Images



Western blot analysis of lysates from HeLa cells,
primary antibody was diluted at 1:1000, 4° over night