



## IPO13 rabbit pAb

|                           |  |
|---------------------------|--|
| <b>Catalog No</b>         | YP-Ab-08148  |
| <b>Isotype</b>            | IgG  |
| <b>Reactivity</b>         | Human; Mouse;Rat   |
| <b>Applications</b>       | WB   |
| <b>Gene Name</b>          | IPO13 KIAA0724 RANBP13   |
| <b>Protein Name</b>       | IPO13  |
| <b>Immunogen</b>          | Synthesized peptide derived from human IPO13 AA range: 484-534   |
| <b>Specificity</b>        | This antibody detects endogenous levels of IPO13 at Human/Mouse/Rat  |
| <b>Formulation</b>        | Liquid in PBS containing 50% glycerol, 0.5% BSA and 0.263% sodium azide.   |
| <b>Source</b>             | Polyclonal, Rabbit,IgG   |
| <b>Purification</b>       | The antibody was affinity-purified from rabbit serum by affinity-chromatography using specific immunogen.  |
| <b>Dilution</b>           | WB 1:500-2000  |
| <b>Concentration</b>      | 1 mg/ml  |
| <b>Purity</b>             | ≥90%   |
| <b>Storage Stability</b>  | -20°C/1 year   |
| <b>Synonyms</b>           | Importin-13 (Imp13) (Karyopherin-13) (Kap13) (Ran-binding protein 13) (RanBP13)  |
| <b>Observed Band</b>      | 105kD  |
| <b>Cell Pathway</b>       | Cytoplasm. Nucleus.  |
| <b>Tissue Specificity</b> | Expressed in fetal brain, heart, intestine and kidney.   |
| <b>Function</b>           | function:Functions in nuclear protein import as nuclear transport receptor. Serves as receptor for nuclear localization signals (NLS) in cargo substrates. Is thought to mediate docking of the importin/substrate complex to the nuclear pore complex (NPC) through binding to nucleoporin and the complex is subsequently translocated through the pore by an energy requiring, Ran-dependent mechanism. At the nucleoplasmic side of the NPC, Ran binds to the importin, the importin/substrate complex dissociates and importin is re-exported from the nucleus to the cytoplasm where GTP hydrolysis releases Ran. The directionality of nuclear import is thought to be conferred by an asymmetric distribution of the GTP- and GDP-bound forms of Ran between the cytoplasm and nucleus (By similarity). Mediates the nuclear import of UBC9, the RBM8A/MAGOH complex, PAX6 and probably other members of the paired homeobox |
| <b>Background</b>         | This gene encodes a member of the importin-beta family of nuclear transport proteins. The encoded protein mediates the import of specific cargo proteins from  |



the cytoplasm to the nucleus and is dependent on the Ras-related nuclear protein-GTPase system. The encoded protein is also involved in nuclear export of the eukaryotic translation initiation factor 1A.[provided by RefSeq, Mar 2009],

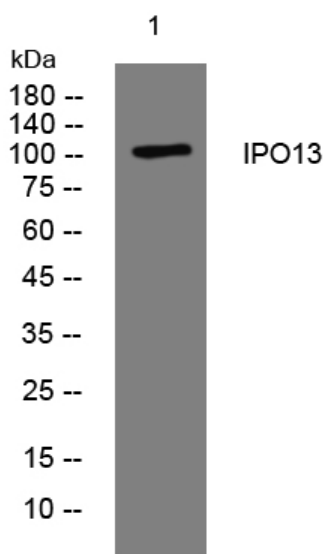
**matters needing attention**

Avoid repeated freezing and thawing!

**Usage suggestions**

This product can be used in immunological reaction related experiments. For more information, please consult technical personnel.

**Products Images**



Western blot analysis of lysates from KB cells, primary antibody was diluted at 1:1000, 4° over night