



# SKOR1 rabbit pAb

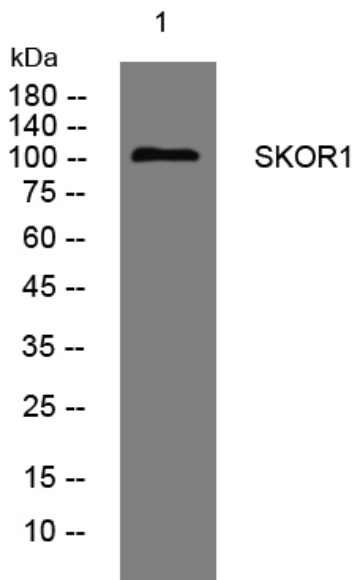
<b>Catalog No</b>	YP-Ab-08157
<b>Isotype</b>	IgG
<b>Reactivity</b>	Human; Mouse;Rat
<b>Applications</b>	WB
<b>Gene Name</b>	SKOR1 CORL1 FUSSEL15 LBXCOR1
<b>Protein Name</b>	SKOR1
<b>Immunogen</b>	Synthesized peptide derived from human SKOR1 AA range: 322-372
<b>Specificity</b>	This antibody detects endogenous levels of SKOR1 at Human/Mouse/Rat
<b>Formulation</b>	Liquid in PBS containing 50% glycerol, 0.5% BSA and 0.272% sodium azide.
<b>Source</b>	Polyclonal, Rabbit,IgG
<b>Purification</b>	The antibody was affinity-purified from rabbit serum by affinity-chromatography using specific immunogen.
<b>Dilution</b>	WB 1:500-2000
<b>Concentration</b>	1 mg/ml
<b>Purity</b>	≥90%
<b>Storage Stability</b>	-20°C/1 year
<b>Synonyms</b>	SKI family transcriptional corepressor 1 (Functional Smad-suppressing element on chromosome 15) (Fussel-15) (LBX1 corepressor 1) (Ladybird homeobox corepressor 1)
<b>Observed Band</b>	105kD
<b>Cell Pathway</b>	Nucleus .
<b>Tissue Specificity</b>	Present specifically in cerebellar Purkinje cells (at protein level).
<b>Function</b>	caution:The sequence shown here is derived from an Ensembl automatic analysis pipeline and should be considered as preliminary data.,function:Acts as a transcriptional corepressor of LBX1 (By similarity). Inhibits BMP signaling.,similarity:Belongs to the SKI family.,subunit:Interacts with LBX1 (By similarity). Interacts with SMAD1, SMAD2 and SMAD3.,tissue specificity:Present specifically in cerebellar Purkinje cells (at protein level).,
<b>Background</b>	
<b>matters needing attention</b>	Avoid repeated freezing and thawing!



**Usage suggestions**

This product can be used in immunological reaction related experiments. For more information, please consult technical personnel.

**Products Images**



Western blot analysis of lysates from KB cells, primary antibody was diluted at 1:1000, 4° over night