

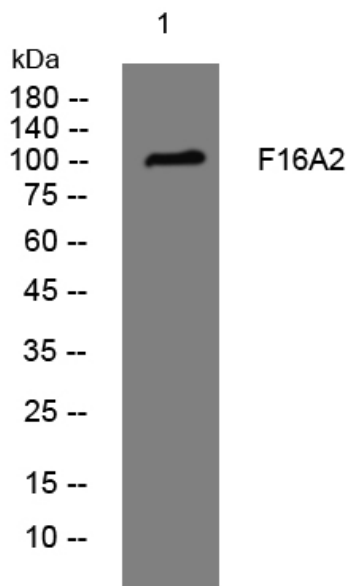


F16A2 rabbit pAb

Catalog No	YP-Ab-08173
Isotype	IgG
Reactivity	Human; Mouse;Rat
Applications	WB
Gene Name	FAM160A2 C11orf56 KIAA1759
Protein Name	F16A2
Immunogen	Synthesized peptide derived from human F16A2 AA range: 430-480
Specificity	This antibody detects endogenous levels of F16A2 at Human/Mouse/Rat
Formulation	Liquid in PBS containing 50% glycerol, 0.5% BSA and 0.288% sodium azide.
Source	Polyclonal, Rabbit,IgG
Purification	The antibody was affinity-purified from rabbit serum by affinity-chromatography using specific immunogen.
Dilution	WB 1:500-2000
Concentration	1 mg/ml
Purity	≥90%
Storage Stability	-20°C/1 year
Synonyms	FTS and Hook-interacting protein (FHIP) (Protein FAM160A2)
Observed Band	105kD
Cell Pathway	cytosol,FHF complex,
Tissue Specificity	Brain,Kidney,Small intestine,
Function	similarity:Belongs to the UPF0518 family.,
Background	
matters needing attention	Avoid repeated freezing and thawing!
Usage suggestions	This product can be used in immunological reaction related experiments. For more information, please consult technical personnel.



Products Images



Western blot analysis of lysates from KB cells, primary antibody was diluted at 1:1000, 4° over night