

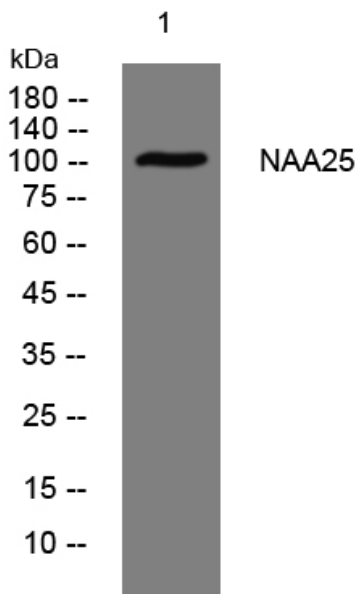


NAA25 rabbit pAb

Catalog No	YP-Ab-08174
Isotype	IgG
Reactivity	Human; Mouse;Rat
Applications	WB
Gene Name	NAA25 C12orf30 MDM20 NAP1
Protein Name	NAA25
Immunogen	Synthesized peptide derived from human NAA25 AA range: 317-367
Specificity	This antibody detects endogenous levels of NAA25 at Human/Mouse/Rat
Formulation	Liquid in PBS containing 50% glycerol, 0.5% BSA and 0.289% sodium azide.
Source	Polyclonal, Rabbit,IgG
Purification	The antibody was affinity-purified from rabbit serum by affinity-chromatography using specific immunogen.
Dilution	WB 1:500-2000
Concentration	1 mg/ml
Purity	≥90%
Storage Stability	-20°C/1 year
Synonyms	N-alpha-acetyltransferase 25, NatB auxiliary subunit (Mitochondrial distribution and morphology protein 20) (N-terminal acetyltransferase B complex subunit MDM20) (NatB complex subunit MDM20) (N-terminal acetyltransferase B complex subunit NAA25) (p120)
Observed Band	105kD
Cell Pathway	Cytoplasm .
Tissue Specificity	
Function	
Background	This gene encodes the auxiliary subunit of the heteromeric N-terminal acetyltransferase B complex. This complex acetylates methionine residues that are followed by acidic or asparagine residues.[provided by RefSeq, Mar 2010],
matters needing attention	Avoid repeated freezing and thawing!
Usage suggestions	This product can be used in immunological reaction related experiments. For more information, please consult technical personnel.



Products Images



Western blot analysis of lysates from 293T cells,
primary antibody was diluted at 1:1000, 4° over night