



TRPC5 rabbit pAb

Catalog No	YP-Ab-08178
Isotype	IgG
Reactivity	Human; Mouse
Applications	WB
Gene Name	TRPC5 TRP5
Protein Name	TRPC5
Immunogen	Synthesized peptide derived from human TRPC5 AA range: 828-878
Specificity	This antibody detects endogenous levels of TRPC5 at Human/Mouse
Formulation	Liquid in PBS containing 50% glycerol, 0.5% BSA and 0.293% sodium azide.
Source	Polyclonal, Rabbit,IgG
Purification	The antibody was affinity-purified from rabbit serum by affinity-chromatography using specific immunogen.
Dilution	WB 1:500-2000
Concentration	1 mg/ml
Purity	≥90%
Storage Stability	-20°C/1 year
Synonyms	Short transient receptor potential channel 5 (TrpC5) (Transient receptor protein 5) (TRP-5) (hTRP-5) (hTRP5)
Observed Band	105kD
Cell Pathway	Cell membrane ; Multi-pass membrane protein .
Tissue Specificity	Expressed in brain with higher levels in fetal brain. Found in cerebellum and occipital pole.
Function	function:Thought to form a receptor-activated non-selective calcium permeant cation channel. Probably is operated by a phosphatidylinositol second messenger system activated by receptor tyrosine kinases or G-protein coupled receptors. Has also been shown to be calcium-selective (By similarity). May also be activated by intracellular calcium store depletion.,similarity:Belongs to the transient receptor family. STrpC subfamily.,similarity:Contains 2 ANK repeats.,subunit:Interacts with NHERF (By similarity). Interacts with MX1 and RNF24.,tissue specificity:Expressed in brain with higher levels in fetal brain.,
Background	This gene belongs to the transient receptor family. It encodes one of the seven mammalian TRPC (transient receptor potential channel) proteins. The encoded protein is a multi-pass membrane protein and is thought to form a receptor-activated non-selective calcium permeant cation channel. The protein is active alone or as a heteromultimeric assembly with TRPC1, TRPC3, and TRPC4. It also interacts with multiple proteins including calmodulin, CABP1, enkurin,



Na(+)-H+ exchange regulatory factor (NHERF), interferon-induced GTP-binding protein (MX1), ring finger protein 24 (RNF24), and SEC14 domain and spectrin repeat-containing protein 1 (SESTD1). [provided by RefSeq, May 2010],

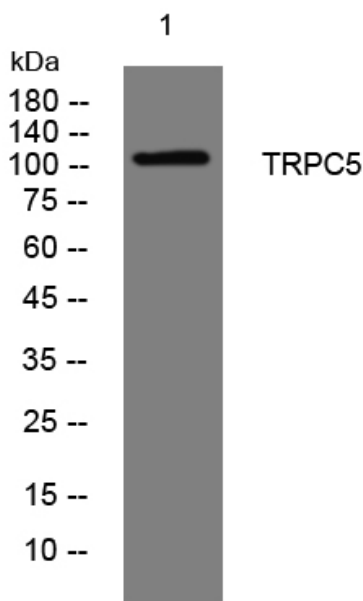
matters needing attention

Avoid repeated freezing and thawing!

Usage suggestions

This product can be used in immunological reaction related experiments. For more information, please consult technical personnel.

Products Images



Western blot analysis of lysates from K562 cells, primary antibody was diluted at 1:1000, 4° over night