



ECHA rabbit pAb

Catalog No	YP-Ab-08186
Isotype	IgG
Reactivity	Human; Mouse;Rat
Applications	WB
Gene Name	HADHA HADH
Protein Name	ECHA
Immunogen	Synthesized peptide derived from human ECHA AA range: 276-326
Specificity	This antibody detects endogenous levels of ECHA at Human/Mouse/Rat
Formulation	Liquid in PBS containing 50% glycerol, 0.5% BSA and 0.301% sodium azide.
Source	Polyclonal, Rabbit,IgG
Purification	The antibody was affinity-purified from rabbit serum by affinity-chromatography using specific immunogen.
Dilution	WB 1:500-2000
Concentration	1 mg/ml
Purity	≥90%
Storage Stability	-20°C/1 year
Synonyms	Trifunctional enzyme subunit alpha, mitochondrial (78 kDa gastrin-binding protein) (TP-alpha) [Includes: Long-chain enoyl-CoA hydratase (EC 4.2.1.17); Long chain 3-hydroxyacyl-CoA dehydrogenase (EC 1.1.1.211)]
Observed Band	85kD
Cell Pathway	Mitochondrion . Mitochondrion inner membrane . Protein stability and association with mitochondrion inner membrane do not require HADHB. .
Tissue Specificity	Epithelium,Lymph,
Function	catalytic activity:(3S)-3-hydroxyacyl-CoA = trans-2(or 3)-enoyl-CoA + H(2)O.,catalytic activity:(S)-3-hydroxyacyl-CoA + NAD(+) = 3-oxoacyl-CoA + NADH.,disease:Defects in HADHA are a cause of maternal acute fatty liver of pregnancy (AFLP) [MIM:609016]. AFLP is a severe maternal illness occurring during pregnancies with affected fetuses. This disease is associated with LCHAD deficiency and characterized by sudden unexplained infant death or hypoglycemia and abnormal liver enzymes (Reye-like syndrome).,disease:Defects in HADHA are a cause of trifunctional protein deficiency (TFP deficiency) [MIM:609015]. The clinical manifestations are very variable and include hypoglycemia, cardiomyopathy and sudden death. Phenotypes with mainly hepatic and neuromyopathic involvement can also be distinguished. Biochemically, TFP deficiency is defined by the loss of all enzyme activities of the TFP complex.

**Background**

This gene encodes the alpha subunit of the mitochondrial trifunctional protein, which catalyzes the last three steps of mitochondrial beta-oxidation of long chain fatty acids. The mitochondrial membrane-bound heterocomplex is composed of four alpha and four beta subunits, with the alpha subunit catalyzing the 3-hydroxyacyl-CoA dehydrogenase and enoyl-CoA hydratase activities. Mutations in this gene result in trifunctional protein deficiency or LCHAD deficiency. The genes of the alpha and beta subunits of the mitochondrial trifunctional protein are located adjacent to each other in the human genome in a head-to-head orientation. [provided by RefSeq, Jul 2008],

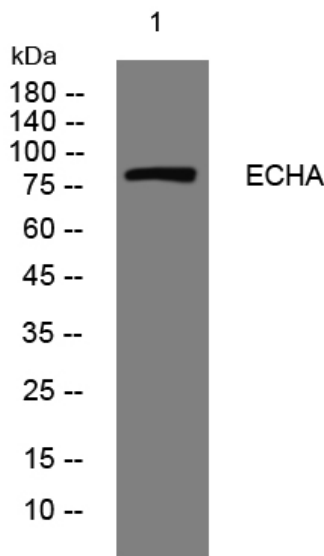
matters needing attention

Avoid repeated freezing and thawing!

Usage suggestions

This product can be used in immunological reaction related experiments. For more information, please consult technical personnel.

Products Images



Western blot analysis of lysates from DU145 cells, primary antibody was diluted at 1:1000, 4° over night