



SATB1 rabbit pAb

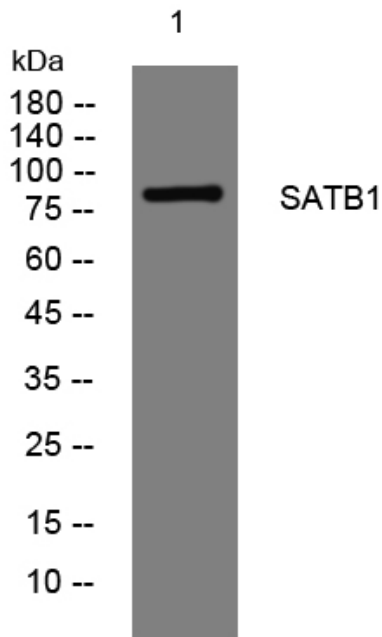
Catalog No	YP-Ab-08187
Isotype	IgG
Reactivity	Human; Mouse
Applications	WB
Gene Name	SATB1
Protein Name	SATB1
Immunogen	Synthesized peptide derived from human SATB1 AA range: 343-393
Specificity	This antibody detects endogenous levels of SATB1 at Human/Mouse
Formulation	Liquid in PBS containing 50% glycerol, 0.5% BSA and 0.302% sodium azide.
Source	Polyclonal, Rabbit,IgG
Purification	The antibody was affinity-purified from rabbit serum by affinity-chromatography using specific immunogen.
Dilution	WB 1:500-2000
Concentration	1 mg/ml
Purity	≥90%
Storage Stability	-20°C/1 year
Synonyms	DNA-binding protein SATB1 (Special AT-rich sequence-binding protein 1)
Observed Band	85kD
Cell Pathway	Nucleus matrix . Nucleus, PML body . Organized into a cage-like network anchoring loops of heterochromatin and tethering specialized DNA sequences (PubMed:12692553). When sumoylated, localized in promyelocytic leukemia nuclear bodies (PML NBs) (PubMed:18408014). .
Tissue Specificity	Expressed predominantly in thymus.
Function	function:Binds to DNA at special AT-rich sequences at nuclear matrix- or scaffold-associated regions. Thought to recognize the sugar-phosphate structure of double-stranded DNA.,PTM:Sumoylated.,similarity:Belongs to the CUT homeobox family.,similarity:Contains 1 homeobox DNA-binding domain.,similarity:Contains 2 CUT DNA-binding domains.,tissue specificity:Expressed predominantly in thymus.,
Background	This gene encodes a matrix protein which binds nuclear matrix and scaffold-associating DNAs through a unique nuclear architecture. The protein recruits chromatin-remodeling factors in order to regulate chromatin structure and gene expression. [provided by RefSeq, Apr 2016],
matters needing attention	Avoid repeated freezing and thawing!



Usage suggestions

This product can be used in immunological reaction related experiments. For more information, please consult technical personnel.

Products Images



Western blot analysis of lysates from Jarkat cells, primary antibody was diluted at 1:1000, 4°over night