



GOGA1 rabbit pAb

| | |
|---------------------------|--|
| Catalog No | YP-Ab-08205 |
| Isotype | IgG |
| Reactivity | Human; Mouse |
| Applications | WB |
| Gene Name | GOLGA1 |
| Protein Name | GOGA1 |
| Immunogen | Synthesized peptide derived from human GOGA1 AA range: 169-219 |
| Specificity | This antibody detects endogenous levels of GOGA1 at Human/Mouse |
| Formulation | Liquid in PBS containing 50% glycerol, 0.5% BSA and 0.320% sodium azide. |
| Source | Polyclonal, Rabbit,IgG |
| Purification | The antibody was affinity-purified from rabbit serum by affinity-chromatography using specific immunogen. |
| Dilution | WB 1:500-2000 |
| Concentration | 1 mg/ml |
| Purity | ≥90% |
| Storage Stability | -20°C/1 year |
| Synonyms | Golgin subfamily A member 1 (Golgin-97) |
| Observed Band | 85kD |
| Cell Pathway | Golgi apparatus membrane ; Peripheral membrane protein . Golgi apparatus, trans-Golgi network membrane . Cytoplasmic vesicle, secretory vesicle, acrosome . |
| Tissue Specificity | Brain,Cervix carcinoma,Testis, |
| Function | disease:Antibodies against GOLGA1 are present in sera from patients with Sjogren syndrome. Sera from patients with Sjogren syndrome often contain antibodies that react with normal components of the Golgi complex.,domain:Extended rod-like protein with coiled-coil domains.,function:Probably involved in maintaining Golgi structure.,similarity:Contains 1 GRIP domain.,subunit:Binds RAB6A., |
| Background | The Golgi apparatus, which participates in glycosylation and transport of proteins and lipids in the secretory pathway, consists of a series of stacked cisternae (flattened membrane sacs). Interactions between the Golgi and microtubules are thought to be important for the reorganization of the Golgi after it fragments during mitosis. This gene encodes one of the golgins, a family of proteins localized to the Golgi. This encoded protein is associated with Sjogren's syndrome. [provided by RefSeq, Feb 2010], |



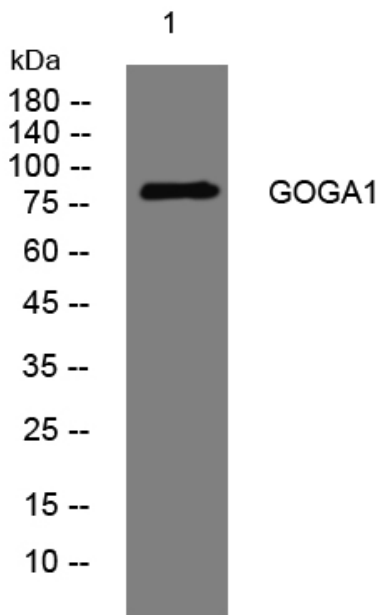
matters needing attention

Avoid repeated freezing and thawing!

Usage suggestions

This product can be used in immunological reaction related experiments. For more information, please consult technical personnel.

Products Images



Western blot analysis of lysates from 3T3 cells, primary antibody was diluted at 1:1000, 4°over night