

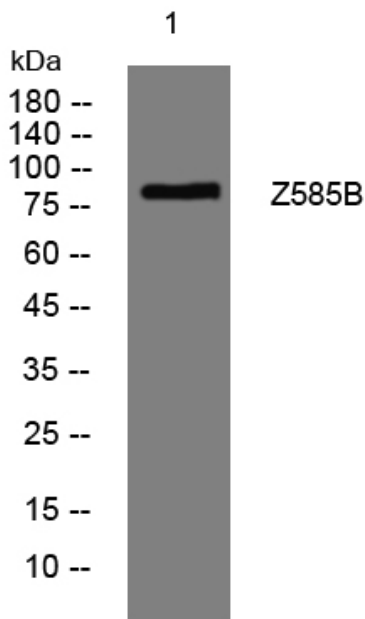


Z585B rabbit pAb

Catalog No	YP-Ab-08216
Isotype	IgG
Reactivity	Human;Rat;Mouse;
Applications	WB
Gene Name	ZNF585B
Protein Name	Z585B
Immunogen	Synthesized peptide derived from human Z585B AA range: 632-682
Specificity	This antibody detects endogenous levels of Z585B at Human
Formulation	Liquid in PBS containing 50% glycerol, 0.5% BSA and 0.331% sodium azide.
Source	Polyclonal, Rabbit,IgG
Purification	The antibody was affinity-purified from rabbit serum by affinity-chromatography using specific immunogen.
Dilution	WB 1:500-2000
Concentration	1 mg/ml
Purity	≥90%
Storage Stability	-20°C/1 year
Synonyms	Zinc finger protein 585B (zinc finger protein 41-like protein)
Observed Band	85kD
Cell Pathway	Nucleus .
Tissue Specificity	Brain,Ovary,Placenta,Testis,
Function	function:May be involved in transcriptional regulation.,similarity:Belongs to the krueppel C2H2-type zinc-finger protein family.,similarity:Contains 1 KRAB domain.,similarity:Contains 21 C2H2-type zinc fingers.,
Background	
matters needing attention	Avoid repeated freezing and thawing!
Usage suggestions	This product can be used in immunological reaction related experiments. For more information, please consult technical personnel.



Products Images



Western blot analysis of lysates from 3T3 cells, primary antibody was diluted at 1:1000, 4° over night