



DAB2 rabbit pAb

| | |
|---------------------------|---|
| Catalog No | YP-Ab-08218 |
| Isotype | IgG |
| Reactivity | Human; Mouse;Rat |
| Applications | WB |
| Gene Name | DAB2 DOC2 |
| Protein Name | DAB2 |
| Immunogen | Synthesized peptide derived from human DAB2 AA range: 683-733 |
| Specificity | This antibody detects endogenous levels of DAB2 at Human/Mouse/Rat |
| Formulation | Liquid in PBS containing 50% glycerol, 0.5% BSA and 0.333% sodium azide. |
| Source | Polyclonal, Rabbit,IgG |
| Purification | The antibody was affinity-purified from rabbit serum by affinity-chromatography using specific immunogen. |
| Dilution | WB 1:500-2000 |
| Concentration | 1 mg/ml |
| Purity | ≥90% |
| Storage Stability | -20°C/1 year |
| Synonyms | Disabled homolog 2 (DOC-2) (Differentially-expressed protein 2) |
| Observed Band | 85kD |
| Cell Pathway | Cytoplasm. Cytoplasmic vesicle, clathrin-coated vesicle membrane. Membrane, clathrin-coated pit. Colocalizes with large insert-containing isoforms of MYO6 at clathrin-coated pits/vesicles. During mitosis is progressively displaced from the membrane and translocated to the cytoplasm. |
| Tissue Specificity | Expressed in deep invaginations, inclusion cysts and the surface epithelial cells of the ovary. Also expressed in breast epithelial cells, spleen, thymus, prostate, testis, macrophages, fibroblasts, lung epithelial cells, placenta, brain stem, heart and small intestine. Expressed in kidney proximal tubular epithelial cells (at protein level). |
| Function | function:Component of the CSF-1 signal transduction pathway.,similarity:Contains 1 PID domain.,subcellular location:Colocalizes with large insert-containing isoforms of MYO6 at clathrin-coated pits/vesicles.,subunit:Interacts with the globular tail of MYO6. Interacts with DAB2IP. Interacts with NOSTRIN.,tissue specificity:Expressed in deep invaginations, inclusion cysts and the surface epithelial cells of the ovary. Also expressed in breast epithelial cells, spleen, thymus, prostate, testis, macrophages, fibroblasts, lung epithelial cells, placenta, brain stem, heart and small intestine., |
| Background | This gene encodes a mitogen-responsive phosphoprotein. It is expressed in normal ovarian epithelial cells, but is down-regulated or absent from ovarian |



carcinoma cell lines, suggesting its role as a tumor suppressor. This protein binds to the SH3 domains of GRB2, an adaptor protein that couples tyrosine kinase receptors to SOS (a guanine nucleotide exchange factor for Ras), via its C-terminal proline-rich sequences, and may thus modulate growth factor/Ras pathways by competing with SOS for binding to GRB2. Alternatively spliced transcript variants encoding different isoforms have been found for this gene. [provided by RefSeq, Oct 2011],

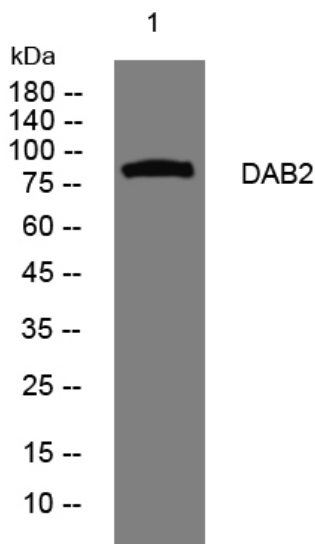
matters needing attention

Avoid repeated freezing and thawing!

Usage suggestions

This product can be used in immunological reaction related experiments. For more information, please consult technical personnel.

Products Images



Western blot analysis of lysates from DU145 cells, primary antibody was diluted at 1:1000, 4° over night