



TTLL3 rabbit pAb

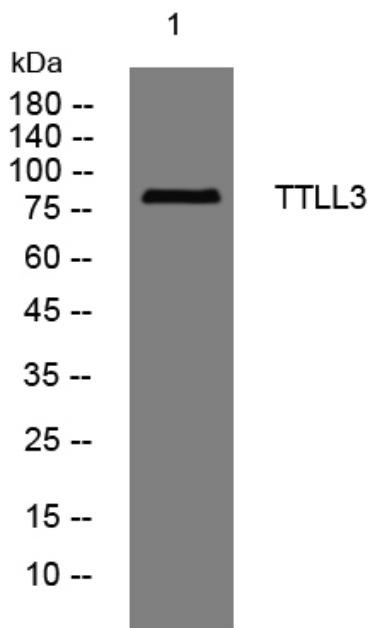
Catalog No	YP-Ab-08229
Isotype	IgG
Reactivity	Human; Mouse
Applications	WB
Gene Name	TTLL3 PRO0207
Protein Name	TTLL3
Immunogen	Synthesized peptide derived from human TTLL3 AA range: 357-407
Specificity	This antibody detects endogenous levels of TTLL3 at Human/Mouse
Formulation	Liquid in PBS containing 50% glycerol, 0.5% BSA and 0.344% sodium azide.
Source	Polyclonal, Rabbit,IgG
Purification	The antibody was affinity-purified from rabbit serum by affinity-chromatography using specific immunogen.
Dilution	WB 1:500-2000
Concentration	1 mg/ml
Purity	≥90%
Storage Stability	-20°C/1 year
Synonyms	Tubulin monoglycylase TTLL3 (EC 6.3.2.-) (HOTTL) (Tubulin--tyrosine ligase-like protein 3)
Observed Band	85kD
Cell Pathway	Cytoplasm, cytoskeleton . Cell projection, cilium . Cytoplasm, cytoskeleton, cilium axoneme . Cytoplasm, cytoskeleton, flagellum axoneme .
Tissue Specificity	Expressed in brain, heart, kidney, testis, liver, lung, muscle, spleen, trachea and colon.
Function	function:Functions as actin-binding component of the Arp2/3 complex which is involved in regulation of actin polymerization and together with an activating nucleation-promoting factor (NPF) mediates the formation of branched actin networks. Seems to contact the mother actin filament.,similarity:Belongs to the ARPC4 family.,similarity:Contains 1 TTL domain.,subunit:Component of the Arp2/3 complex composed of ARP2, ARP3, ARPC1B/p41-ARC, ARPC2/p34-ARC, ARPC3/p21-ARC, ARPC4/p20-ARC and ARPC5/p16-ARC.,
Background	
matters needing attention	Avoid repeated freezing and thawing!



Usage suggestions

This product can be used in immunological reaction related experiments. For more information, please consult technical personnel.

Products Images



Western blot analysis of lysates from HpeG2 cells, primary antibody was diluted at 1:1000, 4° over night