



# PASD1 rabbit pAb

<b>Catalog No</b>	YP-Ab-08237
<b>Isotype</b>	IgG
<b>Reactivity</b>	Human;Rat;Mouse;
<b>Applications</b>	WB
<b>Gene Name</b>	PASD1
<b>Protein Name</b>	PASD1
<b>Immunogen</b>	Synthesized peptide derived from human PASD1 AA range: 710-760
<b>Specificity</b>	This antibody detects endogenous levels of PASD1 at Human
<b>Formulation</b>	Liquid in PBS containing 50% glycerol, 0.5% BSA and 0.352% sodium azide.
<b>Source</b>	Polyclonal, Rabbit,IgG
<b>Purification</b>	The antibody was affinity-purified from rabbit serum by affinity-chromatography using specific immunogen.
<b>Dilution</b>	WB 1:500-2000
<b>Concentration</b>	1 mg/ml
<b>Purity</b>	≥90%
<b>Storage Stability</b>	-20°C/1 year
<b>Synonyms</b>	PAS domain-containing protein 1 (Cancer/testis antigen 63) (CT63) (OX-TES-1)
<b>Observed Band</b>	85kD
<b>Cell Pathway</b>	[Isoform 1]: Nucleus . Associates preferentially at the periphery of the nucleus with heterochromatin (PubMed:25936801). . ; [Isoform 2]: Nucleus . Associates preferentially at the periphery of the nucleus with heterochromatin (PubMed:25936801). .
<b>Tissue Specificity</b>	Testis-specific (PubMed:25936801). Expressed in a broad range of cancer cells, including melanoma, lung cancer, and breast cancer (at protein level). Testis-specific (PubMed:15162151). Found in histologically normal tissues from patients with uterus, lung and small intestine cancers. Widespread expression seen in solid tumors and diffuse large B-cell lymphoma (DLBCL)-derived cell lines. Isoform 2 is expressed in all DLBCL-derived cell lines, while isoform 1 is preferentially expressed in cell lines derived from non-germinal center DLBCL (PubMed:15162151).
<b>Function</b>	function:May function as a transcription factor.,similarity:Contains 1 PAS (PER-ARNT-SIM) domain.,tissue specificity:Testis-specific. Found in histologically normal tissues from patients with uterus, lung and small intestine cancers. Widespread expression seen in solid tumors and diffuse large B-cell lymphoma (DLBCL)-derived cell lines. Isoform 2 is expressed in all DLBCL-derived cell lines, while isoform 1 is preferentially expressed in cell lines derived from non-germinal center DLBCL.,

**Background**

This gene encodes a protein that is thought to function as a transcription factor. The protein is a cancer-associated antigen that can stimulate autologous T-cell responses, and it is therefore considered to be a potential immunotherapeutic target for the treatment of various hematopoietic malignancies, including diffuse large B-cell lymphoma. [provided by RefSeq, May 2010],

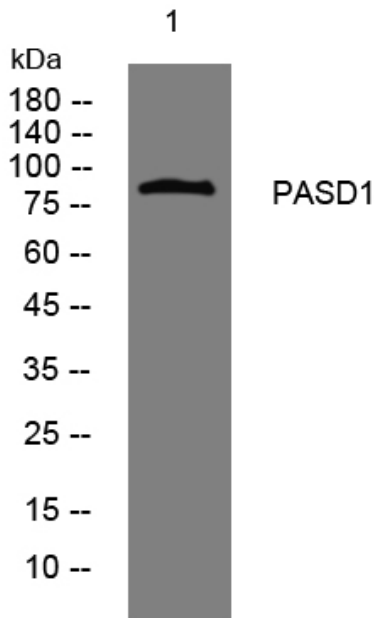
**matters needing attention**

Avoid repeated freezing and thawing!

**Usage suggestions**

This product can be used in immunological reaction related experiments. For more information, please consult technical personnel.

## Products Images



Western blot analysis of lysates from PC-12 cells, primary antibody was diluted at 1:1000, 4° over night