

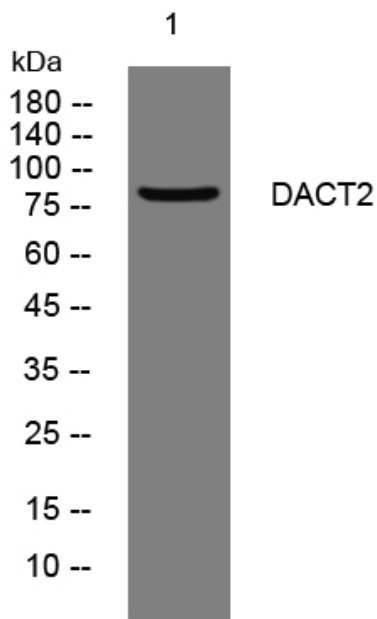


## DACT2 rabbit pAb

<b>Catalog No</b>	YP-Ab-08240
<b>Isotype</b>	IgG
<b>Reactivity</b>	Human; Mouse
<b>Applications</b>	WB
<b>Gene Name</b>	DACT2 C6orf116 PP13671
<b>Protein Name</b>	DACT2
<b>Immunogen</b>	Synthesized peptide derived from human DACT2 AA range: 239-289
<b>Specificity</b>	This antibody detects endogenous levels of DACT2 at Human/Mouse
<b>Formulation</b>	Liquid in PBS containing 50% glycerol, 0.5% BSA and 0.355% sodium azide.
<b>Source</b>	Polyclonal, Rabbit,IgG
<b>Purification</b>	The antibody was affinity-purified from rabbit serum by affinity-chromatography using specific immunogen.
<b>Dilution</b>	WB 1:500-2000
<b>Concentration</b>	1 mg/ml
<b>Purity</b>	≥90%
<b>Storage Stability</b>	-20°C/1 year
<b>Synonyms</b>	Dapper homolog 2 (Dapper antagonist of catenin 2)
<b>Observed Band</b>	85kD
<b>Cell Pathway</b>	cytoplasm,mitochondrion,
<b>Tissue Specificity</b>	Placenta,
<b>Function</b>	domain:The C-terminal PDZ-binding motif may mediate interaction with the PDZ domains of DSH (Dishevelled) family proteins.,function:Negatively regulates the Nodal signaling pathway, possibly by promoting the lysosomal degradation of Nodal receptors.,similarity:Belongs to the dapper family.,
<b>Background</b>	
<b>matters needing attention</b>	Avoid repeated freezing and thawing!
<b>Usage suggestions</b>	This product can be used in immunological reaction related experiments. For more information, please consult technical personnel.



## Products Images



Western blot analysis of lysates from HCT116 cells,  
primary antibody was diluted at 1:1000, 4° over night