



# PACE1 rabbit pAb

<b>Catalog No</b>	YP-Ab-08248
<b>Isotype</b>	IgG
<b>Reactivity</b>	Human; Mouse
<b>Applications</b>	WB
<b>Gene Name</b>	SCYL3 PACE1
<b>Protein Name</b>	PACE1
<b>Immunogen</b>	Synthesized peptide derived from human PACE1 AA range: 519-569
<b>Specificity</b>	This antibody detects endogenous levels of PACE1 at Human/Mouse
<b>Formulation</b>	Liquid in PBS containing 50% glycerol, 0.5% BSA and 0.02% sodium azide.
<b>Source</b>	Polyclonal, Rabbit,IgG
<b>Purification</b>	The antibody was affinity-purified from rabbit serum by affinity-chromatography using specific immunogen.
<b>Dilution</b>	WB 1: 500-2000
<b>Concentration</b>	1 mg/ml
<b>Purity</b>	≥90%
<b>Storage Stability</b>	-20°C/1 year
<b>Synonyms</b>	
<b>Observed Band</b>	
<b>Cell Pathway</b>	Cytoplasm . Golgi apparatus . Cell projection, lamellipodium . Colocalized with EZR/VIL2, actin and CD44 in lamellipodia.
<b>Tissue Specificity</b>	Ubiquitously expressed.
<b>Function</b>	domain:The protein kinase domain is predicted to be catalytically inactive.,function:May play a role in regulating cell adhesion/migration complexes in migrating cells.,PTM:May be myristoylated; myristoylation may target it to Golgi compartment.,PTM:Phosphorylated.,similarity:Belongs to the protein kinase superfamily.,similarity:Contains 1 protein kinase domain.,similarity:Contains 4 HEAT repeats.,subcellular location:Colocalized with EZR/VIL2, actin and CD44 in lamellipodia.,subunit:Interacts with EZR/VIL2 C-terminal domain.,tissue specificity:Ubiquitously expressed.,
<b>Background</b>	This gene encodes a protein with a kinase domain and four HEAT repeats. The encoded protein interacts with the C-terminal domain of ezrin, an ERM protein, and may play a role in cell adhesion and migration. Alternative splicing results in multiple transcript variants encoding multiple isoforms. [provided by RefSeq, Jun 2012],



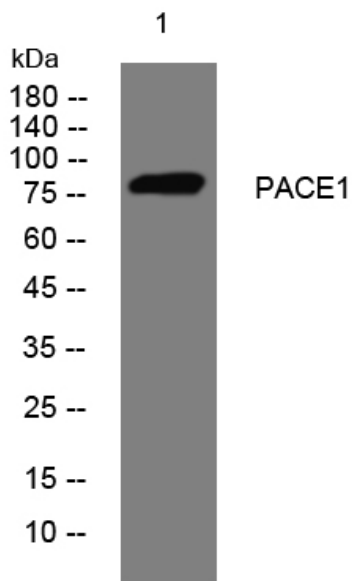
**matters needing attention**

Avoid repeated freezing and thawing!

**Usage suggestions**

This product can be used in immunological reaction related experiments. For more information, please consult technical personnel.

## Products Images



Western blot analysis of lysates from SW480 cells, primary antibody was diluted at 1:1000, 4° over night