



OZF rabbit pAb

Catalog No	YP-Ab-08260
Isotype	IgG
Reactivity	Human; Mouse
Applications	WB
Gene Name	ZNF146 OZF
Protein Name	OZF
Immunogen	Synthesized peptide derived from human OZF AA range: 3-53
Specificity	This antibody detects endogenous levels of OZF at Human/Mouse
Formulation	Liquid in PBS containing 50% glycerol, 0.5% BSA and 0.02% sodium azide.
Source	Polyclonal, Rabbit,IgG
Purification	The antibody was affinity-purified from rabbit serum by affinity-chromatography using specific immunogen.
Dilution	WB 1: 500-2000
Concentration	1 mg/ml
Purity	≥90%
Storage Stability	-20°C/1 year
Synonyms	
Observed Band	
Cell Pathway	Nucleus .
Tissue Specificity	Liver, skeletal and heart muscle, mammary cells. Very low levels in brain, lung, placenta and kidney. Strongly overexpressed in many pancreas and colorectal cancers. Increased gene copy numbers are detected in 3 of 12 tumor cell lines and 2 of 12 primary pancreatic carcinomas. Overexpressed in 80% of colorectal cancers.
Function	miscellaneous:Strongly overexpressed in many pancreas and colorectal cancers. Increased gene copy numbers are detected in 3 of 12 tumor cell lines and 2 of 12 primary pancreatic carcinomas. Overexpressed in 80% of colorectal cancers.,PTM:Sumoylated.,similarity:Belongs to the krueppel C2H2-type zinc-finger protein family.,similarity:Contains 10 C2H2-type zinc fingers.,subunit:binds DNA. Interacts with SUMO conjugating enzyme UBC9/UBE2I. Interacts with the telomeric protein TERF2IP.,tissue specificity:Liver, skeletal and heart muscle, mammary cells. Very low levels in brain, lung, placenta and kidney.,
Background	



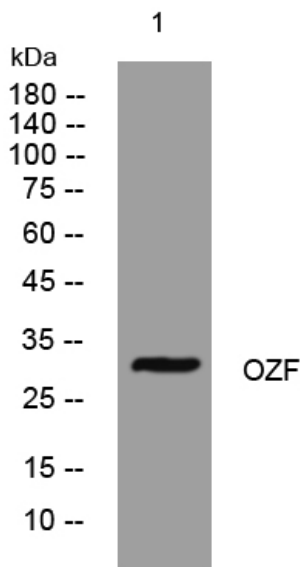
matters needing attention

Avoid repeated freezing and thawing!

Usage suggestions

This product can be used in immunological reaction related experiments. For more information, please consult technical personnel.

Products Images



Western blot analysis of lysates from KB cells, primary antibody was diluted at 1:1000, 4°over night