

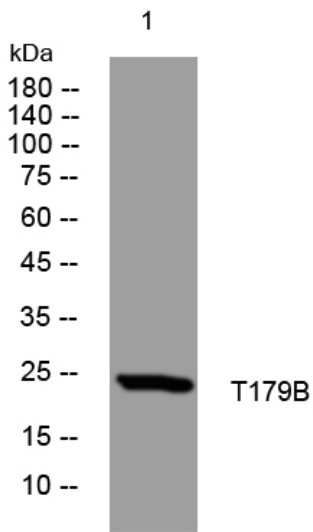


# T179B rabbit pAb

|                                  |   |
|----------------------------------|---|
| <b>Catalog No</b>                | YP-Ab-08267   |
| <b>Isotype</b>                   | IgG   |
| <b>Reactivity</b>                | Human; Mouse  |
| <b>Applications</b>              | WB  |
| <b>Gene Name</b>                 | TMEM179B  |
| <b>Protein Name</b>              | T179B   |
| <b>Immunogen</b>                 | Synthesized peptide derived from human T179B AA range: 139-189  |
| <b>Specificity</b>               | This antibody detects endogenous levels of T179B at Human/Mouse   |
| <b>Formulation</b>               | Liquid in PBS containing 50% glycerol, 0.5% BSA and 0.02% sodium azide.   |
| <b>Source</b>                    | Polyclonal, Rabbit,IgG  |
| <b>Purification</b>              | The antibody was affinity-purified from rabbit serum by affinity-chromatography using specific immunogen.                         |
| <b>Dilution</b>                  | WB 1: 500-2000  |
| <b>Concentration</b>             | 1 mg/ml   |
| <b>Purity</b>                    | ≥90%  |
| <b>Storage Stability</b>         | -20°C/1 year  |
| <b>Synonyms</b>                  |   |
| <b>Observed Band</b>             |   |
| <b>Cell Pathway</b>              | Membrane ; Multi-pass membrane protein .  |
| <b>Tissue Specificity</b>        |   |
| <b>Function</b>                  | similarity:Belongs to the TMEM179 family.,  |
| <b>Background</b>                |   |
| <b>matters needing attention</b> | Avoid repeated freezing and thawing!  |
| <b>Usage suggestions</b>         | This product can be used in immunological reaction related experiments. For more information, please consult technical personnel. |



## Products Images



Western blot analysis of lysates from HpeG2 cells,  
primary antibody was diluted at 1:1000, 4° over night