



NIPS1 rabbit pAb

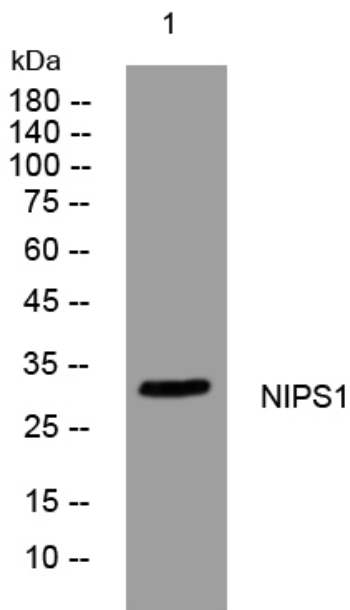
Catalog No	YP-Ab-08277
Isotype	IgG
Reactivity	Human; Mouse
Applications	WB
Gene Name	NIPSNAP1
Protein Name	NIPS1
Immunogen	Synthesized peptide derived from human NIPS1 AA range: 183-233
Specificity	This antibody detects endogenous levels of NIPS1 at Human/Mouse
Formulation	Liquid in PBS containing 50% glycerol, 0.5% BSA and 0.02% sodium azide.
Source	Polyclonal, Rabbit,IgG
Purification	The antibody was affinity-purified from rabbit serum by affinity-chromatography using specific immunogen.
Dilution	WB 1: 500-2000
Concentration	1 mg/ml
Purity	≥90%
Storage Stability	-20°C/1 year
Synonyms	
Observed Band	
Cell Pathway	mitochondrion,mitochondrial inner membrane,synaptic membrane,
Tissue Specificity	Ubiquitous. Highest expression in liver.
Function	similarity:Belongs to the NipSnap family.,tissue specificity:Ubiquitous. Highest expression in liver.,
Background	This gene encodes a member of the NipSnap family of proteins that may be involved in vesicular transport. A similar protein in mice inhibits the calcium channel TRPV6, and is also localized to the inner mitochondrial membrane where it may play a role in mitochondrial DNA maintenance. A pseudogene of this gene is located on the short arm of chromosome 17. Alternatively spliced transcript variants encoding multiple isoforms have been observed for this gene. [provided by RefSeq, Feb 2011],
matters needing attention	Avoid repeated freezing and thawing!



Usage suggestions

This product can be used in immunological reaction related experiments. For more information, please consult technical personnel.

Products Images



Western blot analysis of lysates from HuvEc cells, primary antibody was diluted at 1:1000, 4° over night