



# CD11A rabbit pAb

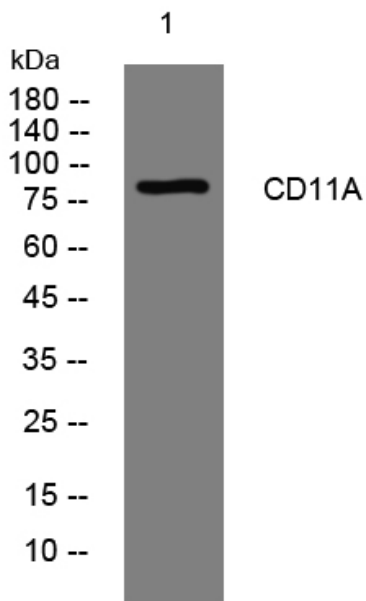
<b>Catalog No</b>	YP-Ab-08340
<b>Isotype</b>	IgG
<b>Reactivity</b>	Human;Rat;Mouse;
<b>Applications</b>	WB
<b>Gene Name</b>	CDK11A CDC2L2 CDC2L3 PITSLREB
<b>Protein Name</b>	CD11A
<b>Immunogen</b>	Synthesized peptide derived from human CD11A AA range: 53-103
<b>Specificity</b>	This antibody detects endogenous levels of CD11A at Human
<b>Formulation</b>	Liquid in PBS containing 50% glycerol, 0.5% BSA and 0.02% sodium azide.
<b>Source</b>	Polyclonal, Rabbit,IgG
<b>Purification</b>	The antibody was affinity-purified from rabbit serum by affinity-chromatography using specific immunogen.
<b>Dilution</b>	WB 1: 500-2000
<b>Concentration</b>	1 mg/ml
<b>Purity</b>	≥90%
<b>Storage Stability</b>	-20°C/1 year
<b>Synonyms</b>	
<b>Observed Band</b>	
<b>Cell Pathway</b>	Cytoplasm. Nucleus.
<b>Tissue Specificity</b>	Expressed ubiquitously. Some evidence of isoform-specific tissue distribution.
<b>Function</b>	caution:The sequence shown here is derived from an Ensembl automatic analysis pipeline and should be considered as preliminary data.,
<b>Background</b>	This gene encodes a member of the serine/threonine protein kinase family. Members of this kinase family are known to be essential for eukaryotic cell cycle control. Due to a segmental duplication, this gene shares very high sequence identity with a neighboring gene. These two genes are frequently deleted or altered in neuroblastoma. The protein kinase encoded by this gene can be cleaved by caspases and may play a role in cell apoptosis. Alternative splicing results in multiple transcript variants. [provided by RefSeq, Sep 2015],
<b>matters needing attention</b>	Avoid repeated freezing and thawing!



**Usage suggestions**

This product can be used in immunological reaction related experiments. For more information, please consult technical personnel.

**Products Images**



Western blot analysis of lysates from HeLa cells, primary antibody was diluted at 1:1000, 4° over night