



## CDRT1 rabbit pAb

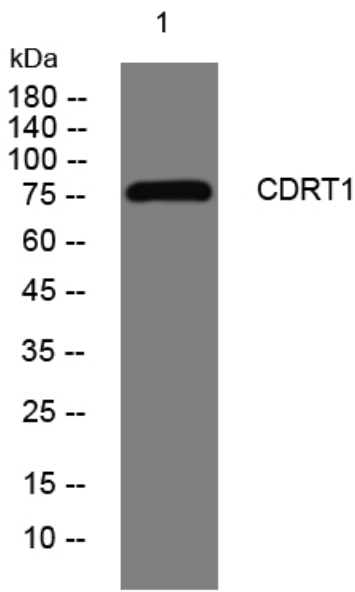
<b>Catalog No</b>	YP-Ab-08373
<b>Isotype</b>	IgG
<b>Reactivity</b>	Human;Rat;Mouse;
<b>Applications</b>	WB
<b>Gene Name</b>	CDRT1 C17orf1 C17orf1A HREP
<b>Protein Name</b>	CDRT1
<b>Immunogen</b>	Synthesized peptide derived from human CDRT1 AA range: 364-414
<b>Specificity</b>	This antibody detects endogenous levels of CDRT1 at Human
<b>Formulation</b>	Liquid in PBS containing 50% glycerol, 0.5% BSA and 0.02% sodium azide.
<b>Source</b>	Polyclonal, Rabbit,IgG
<b>Purification</b>	The antibody was affinity-purified from rabbit serum by affinity-chromatography using specific immunogen.
<b>Dilution</b>	WB 1: 500-2000
<b>Concentration</b>	1 mg/ml
<b>Purity</b>	≥90%
<b>Storage Stability</b>	-20°C/1 year
<b>Synonyms</b>	
<b>Observed Band</b>	
<b>Cell Pathway</b>	intracellular,
<b>Tissue Specificity</b>	Expressed in pancreas, heart and skeletal muscle.
<b>Function</b>	miscellaneous:CDRT1 gene is located centromeric to and partially within proximal CMT1A-REP element. CMT1A-REP is a complex binary repeat element flanking a 1.5-Mb DNA region duplicated in Charcot-Marie-Tooth disease type I (CMT1A) or deleted in Hereditary neuropathy (HNPP).,similarity:Contains 4 WD repeats.,tissue specificity:Expressed in pancreas, heart and skeletal muscle.,
<b>Background</b>	Members of the F-box protein family, such as FBXW10, are characterized by an approximately 40-amino acid F-box motif. SCF complexes, formed by SKP1 (MIM 601434), cullin (see CUL1; MIM 603034), and F-box proteins, act as protein-ubiquitin ligases. F-box proteins interact with SKP1 through the F box, and they interact with ubiquitination targets through other protein interaction domains (Jin et al., 2004 [PubMed 15520277]).[supplied by OMIM, Mar 2008],
<b>matters needing attention</b>	Avoid repeated freezing and thawing!



**Usage suggestions**

This product can be used in immunological reaction related experiments. For more information, please consult technical personnel.

**Products Images**



Western blot analysis of lysates from SH-SY5Y cells, primary antibody was diluted at 1:1000, 4° over night