



NUDT5 rabbit pAb

Catalog No	YP-Ab-08388
Isotype	IgG
Reactivity	Human; Mouse;Rat
Applications	WB
Gene Name	NUDT5 HSPC115
Protein Name	NUDT5
Immunogen	Synthesized peptide derived from human NUDT5 AA range: 95-145
Specificity	This antibody detects endogenous levels of NUDT5 at Human/Mouse/Rat
Formulation	Liquid in PBS containing 50% glycerol, 0.5% BSA and 0.02% sodium azide.
Source	Polyclonal, Rabbit,IgG
Purification	The antibody was affinity-purified from rabbit serum by affinity-chromatography using specific immunogen.
Dilution	WB 1: 500-2000
Concentration	1 mg/ml
Purity	≥90%
Storage Stability	-20°C/1 year
Synonyms	
Observed Band	
Cell Pathway	Nucleus .
Tissue Specificity	Widely expressed. Most abundant in liver.
Function	catalytic activity:ADP-ribose + H(2)O = AMP + D-ribose 5-phosphate.,catalytic activity:ADP-sugar + H(2)O = AMP + alpha-D-aldose 5-phosphate.,cofactor:Magnesium.,function:Hydrolyzes with similar activities ADP-ribose, ADP-mannose, and ADP-glucose. Can also hydrolyze other nucleotide sugars with low activity.,similarity:Belongs to the Nudix hydrolase family.,subunit:Homodimer.,tissue specificity:Widely expressed. Most abundant in liver.,
Background	This gene belongs to the Nudix (nucleoside diphosphate linked moiety X) hydrolase superfamily. The encoded enzyme catalyzes the hydrolysis of modified nucleoside diphosphates, including ADP-ribose (ADPR) and 8-oxoGua-containing 8-oxo-dADP and 8-oxo-dGDP. Protein-bound ADP ribose can be hazardous to the cell because it can modify some amino acid residues, resulting in the inhibition of ATP-activated potassium channels. 8-oxoGua is an oxidized form of guanine that can potentially alter genetic information by pairing with adenine and cytosine in RNA. Presence of 8-oxoGua in RNA results in formation of abnormal proteins



due to translational errors. [provided by RefSeq, Aug 2013],

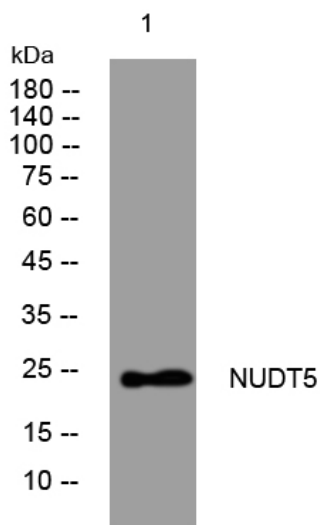
matters needing attention

Avoid repeated freezing and thawing!

Usage suggestions

This product can be used in immunological reaction related experiments. For more information, please consult technical personnel.

Products Images



Western blot analysis of lysates from KB cells, primary antibody was diluted at 1:1000, 4°over night