



TF2H3 rabbit pAb

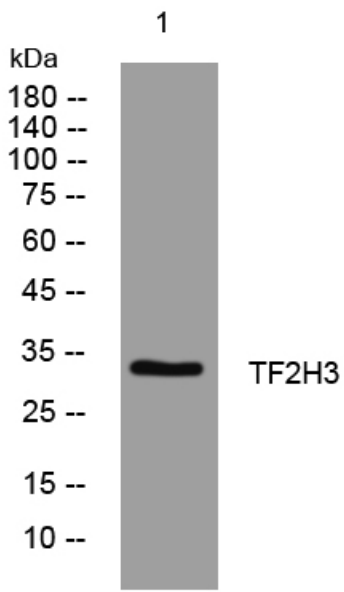
Catalog No	YP-Ab-08401
Isotype	IgG
Reactivity	Human; Mouse;Rat
Applications	WB
Gene Name	GTF2H3
Protein Name	TF2H3
Immunogen	Synthesized peptide derived from human TF2H3 AA range: 39-89
Specificity	This antibody detects endogenous levels of TF2H3 at Human/Mouse/Rat
Formulation	Liquid in PBS containing 50% glycerol, 0.5% BSA and 0.02% sodium azide.
Source	Polyclonal, Rabbit,IgG
Purification	The antibody was affinity-purified from rabbit serum by affinity-chromatography using specific immunogen.
Dilution	WB 1: 500-2000
Concentration	1 mg/ml
Purity	≥90%
Storage Stability	-20°C/1 year
Synonyms	
Observed Band	
Cell Pathway	Nucleus .
Tissue Specificity	
Function	function:Component of the core-TFIID basal transcription factor involved in nucleotide excision repair (NER) of DNA and, when complexed to CAK, in RNA transcription by RNA polymerase II. Anchors XPB.,similarity:Belongs to the TFB4 family.,subunit:One of the six subunits forming the core-TFIID basal transcription factor.,
Background	This gene encodes a member of the TFB4 family. The encoded protein is a subunit of the core-TFIID basal transcription factor and localizes to the nucleus. The encoded protein is involved in RNA transcription by RNA polymerase II and nucleotide excision repair and associates with the Cdk-activating kinase complex. Alternative splicing results in multiple transcript variants. A related pseudogene has been identified on chromosome 14. [provided by RefSeq, Dec 2012],
matters needing attention	Avoid repeated freezing and thawing!



Usage suggestions

This product can be used in immunological reaction related experiments. For more information, please consult technical personnel.

Products Images



Western blot analysis of lysates from 293T cells,
primary antibody was diluted at 1:1000, 4° over night