



CCDB1 rabbit pAb

Catalog No	YP-Ab-08419
Isotype	IgG
Reactivity	Human; Mouse;Rat
Applications	WB
Gene Name	CCNDBP1 DIP1 GCIP HHM
Protein Name	CCDB1
Immunogen	Synthesized peptide derived from human CCDB1 AA range: 53-103
Specificity	This antibody detects endogenous levels of CCDB1 at Human/Mouse/Rat
Formulation	Liquid in PBS containing 50% glycerol, 0.5% BSA and 0.02% sodium azide.
Source	Polyclonal, Rabbit,IgG
Purification	The antibody was affinity-purified from rabbit serum by affinity-chromatography using specific immunogen.
Dilution	WB 1: 500-2000
Concentration	1 mg/ml
Purity	≥90%
Storage Stability	-20°C/1 year
Synonyms	
Observed Band	
Cell Pathway	Cytoplasm. Nucleus.
Tissue Specificity	Ubiquitously expressed. Expression is down-regulated in a variety of tumor types including breast, colon, prostate and rectal tumors, and is up-regulated in certain hepatic carcinomas.
Function	developmental stage:Expression may increase during differentiation.,function:May negatively regulate cell cycle progression. May act at least in part via inhibition of the cyclin-D1/CDK4 complex, thereby preventing phosphorylation of RB1 and blocking E2F-dependent transcription.,induction:Expression is induced by sodium butyrate, an inhibitor of colon cancer cell proliferation.,PTM:Phosphorylated.,similarity:Belongs to the CCNDBP1 family.,subunit:Interacts with CCND1 and GRAP2. May also interact with COPS5, RPLP0, SIRT6, SYF2 and TCF3.,tissue specificity:Ubiquitously expressed. Expression is down-regulated in a variety of tumor types including breast, colon, prostate and rectal tumors, and is up-regulated in certain hepatic carcinomas.,
Background	This gene was identified by the interaction of its gene product with Grap2, a leukocyte-specific adaptor protein important for immune cell signaling. The protein encoded by this gene was shown to interact with cyclin D. Transfection of this



gene in cells was reported to reduce the phosphorylation of Rb gene product by cyclin D-dependent protein kinase, and inhibit E2F1-mediated transcription activity. This protein was also found to interact with helix-loop-helix protein E12 and is thought to be a negative regulator of liver-specific gene expression. Several alternatively spliced variants have been found for this gene. [provided by RefSeq, Apr 2009],

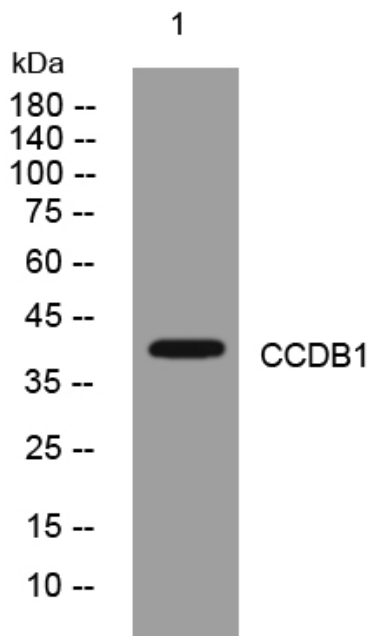
matters needing attention

Avoid repeated freezing and thawing!

Usage suggestions

This product can be used in immunological reaction related experiments. For more information, please consult technical personnel.

Products Images



Western blot analysis of lysates from U2OS cells, primary antibody was diluted at 1:1000, 4° over night