



# TXLNG rabbit pAb

<b>Catalog No</b>	YP-Ab-08450
<b>Isotype</b>	IgG
<b>Reactivity</b>	Human; Mouse
<b>Applications</b>	WB
<b>Gene Name</b>	TXLNG CXorf15 ELRG LSR5
<b>Protein Name</b>	TXLNG
<b>Immunogen</b>	Synthesized peptide derived from human TXLNG AA range: 219-269
<b>Specificity</b>	This antibody detects endogenous levels of TXLNG at Human/Mouse
<b>Formulation</b>	Liquid in PBS containing 50% glycerol, 0.5% BSA and 0.02% sodium azide.
<b>Source</b>	Polyclonal, Rabbit,IgG
<b>Purification</b>	The antibody was affinity-purified from rabbit serum by affinity-chromatography using specific immunogen.
<b>Dilution</b>	WB 1: 500-2000
<b>Concentration</b>	1 mg/ml
<b>Purity</b>	≥90%
<b>Storage Stability</b>	-20°C/1 year
<b>Synonyms</b>	
<b>Observed Band</b>	
<b>Cell Pathway</b>	Nucleus membrane . Cytoplasm, cytosol .
<b>Tissue Specificity</b>	Ubiquitously expressed. Expressed at high level in heart and skeletal muscle. Expressed in brain, placenta, lung, liver, kidney and pancreas.
<b>Function</b>	function:May be involved in intracellular vesicle traffic.,similarity:Belongs to the taxilin family.,subunit:Binds to the C-terminal coiled coil region of syntaxin family members STX1A, STX3A and STX4A.,tissue specificity:Ubiquitously expressed. Expressed at high level in heart and skeletal muscle. Expressed in brain, placenta, lung, liver, kidney and pancreas.,
<b>Background</b>	This gene encodes a member of the taxilin family. The encoded protein binds to the C-terminal coiled-coil region of syntaxin family members 1A, 3A and 4A, and may play a role in intracellular vesicle trafficking. This gene is up-regulated by lipopolysaccharide and the gene product may be involved in cell cycle regulation. The related mouse protein was also shown to inhibit activating transcription factor 4-mediated transcription and thus regulate bone mass accrual. Alternatively spliced transcript variants encoding different isoforms have been found for this gene. [provided by RefSeq, Dec 2009],



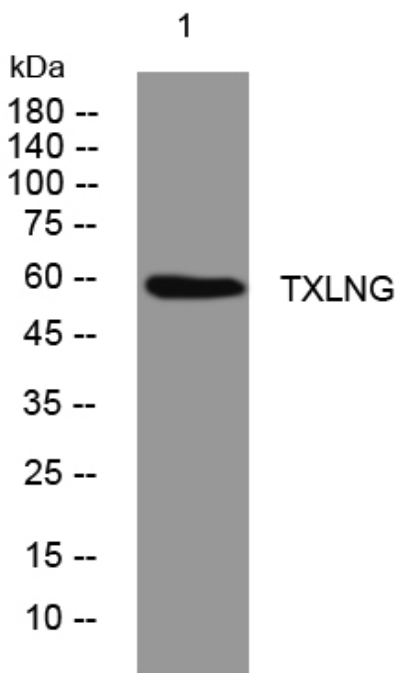
**matters needing attention**

Avoid repeated freezing and thawing!

**Usage suggestions**

This product can be used in immunological reaction related experiments. For more information, please consult technical personnel.

## Products Images



Western blot analysis of lysates from PC-12 cells, primary antibody was diluted at 1:1000, 4° over night