



# MSMP rabbit pAb

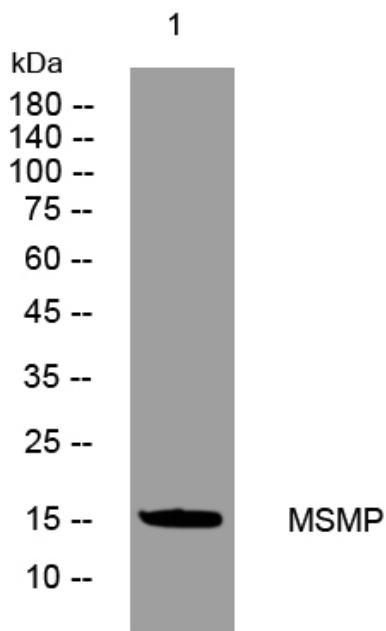
<b>Catalog No</b>	YP-Ab-08463
<b>Isotype</b>	IgG
<b>Reactivity</b>	Human; Mouse
<b>Applications</b>	WB
<b>Gene Name</b>	MSMP PSMP
<b>Protein Name</b>	MSMP
<b>Immunogen</b>	Synthesized peptide derived from human MSMP AA range: 58-108
<b>Specificity</b>	This antibody detects endogenous levels of MSMP at Human/Mouse
<b>Formulation</b>	Liquid in PBS containing 50% glycerol, 0.5% BSA and 0.02% sodium azide.
<b>Source</b>	Polyclonal, Rabbit,IgG
<b>Purification</b>	The antibody was affinity-purified from rabbit serum by affinity-chromatography using specific immunogen.
<b>Dilution</b>	WB 1: 500-2000
<b>Concentration</b>	1 mg/ml
<b>Purity</b>	≥90%
<b>Storage Stability</b>	-20°C/1 year
<b>Synonyms</b>	
<b>Observed Band</b>	
<b>Cell Pathway</b>	Secreted .
<b>Tissue Specificity</b>	Detected in prostate epithelium (at protein level) (PubMed:17338636). Detected in trachea and testis (PubMed:17338636). Highly expressed in benign prostatic hyperplasia and in some prostate cancers, and can also be detected in breast tumor tissue (PubMed:17338636, PubMed:24442440).
<b>Function</b>	similarity:Belongs to the beta-microseminoprotein family.,tissue specificity:Detected in prostate epithelium (at protein level). Detected in trachea and testis. Highly expressed in the human prostate cancer cell line PC-3.,
<b>Background</b>	This gene encodes a member of the beta-microseminoprotein family. Members of this protein family contain ten conserved cysteine residues that form intra-molecular disulfide bonds. The encoded protein may play a role in prostate cancer tumorigenesis. [provided by RefSeq, Jan 2011],
<b>matters needing attention</b>	Avoid repeated freezing and thawing!



**Usage suggestions**

This product can be used in immunological reaction related experiments. For more information, please consult technical personnel.

**Products Images**



Western blot analysis of lysates from KB cells, primary antibody was diluted at 1:1000, 4° over night