



ELF2 rabbit pAb

Catalog No	YP-Ab-08478
Isotype	IgG
Reactivity	Human; Mouse
Applications	WB
Gene Name	ELF2 NERF
Protein Name	ELF2
Immunogen	Synthesized peptide derived from human ELF2 AA range: 80-130
Specificity	This antibody detects endogenous levels of ELF2 at Human/Mouse
Formulation	Liquid in PBS containing 50% glycerol, 0.5% BSA and 0.02% sodium azide.
Source	Polyclonal, Rabbit,IgG
Purification	The antibody was affinity-purified from rabbit serum by affinity-chromatography using specific immunogen.
Dilution	WB 1: 500-2000
Concentration	1 mg/ml
Purity	≥90%
Storage Stability	-20°C/1 year
Synonyms	
Observed Band	
Cell Pathway	Nucleus.
Tissue Specificity	Expressed in all fetal and adult tissues examined. Among fetal tissues, highest levels of expression detected in heart, lung, liver and kidney, and lower levels in brain. Among adult tissues, highest levels of expression detected in heart, placenta, lung, skeletal muscle, spleen, thymus, testis and ovary. Moderate expression in prostate, small intestine, kidney, liver and pancreas, and weak expression in colon, brain and peripheral blood lymphocytes.
Function	function:Isoform 1 transcriptionally activates the LYN and BLK promoters and acts synergistically with RUNX1 to transactivate the BLK promoter. Isoform 2 may function in repression of RUNX1-mediated transactivation.,similarity:Belongs to the ETS family.,similarity:Contains 1 ETS DNA-binding domain.,subunit:Interacts with the LIM domains of LMO2 (By similarity). Interacts via its N-terminal region with RUNX1.,tissue specificity:Expressed in all fetal and adult tissues examined. Among fetal tissues, highest levels of expression detected in heart, lung, liver and kidney, and lower levels in brain. Among adult tissues, highest levels of expression detected in heart, placenta, lung, skeletal muscle, spleen, thymus, testis and ovary. Moderate expression in prostate, small intestine, kidney, liver and pancreas, and weak expression in colon, brain and peripheral blood lymphocytes.,



Background

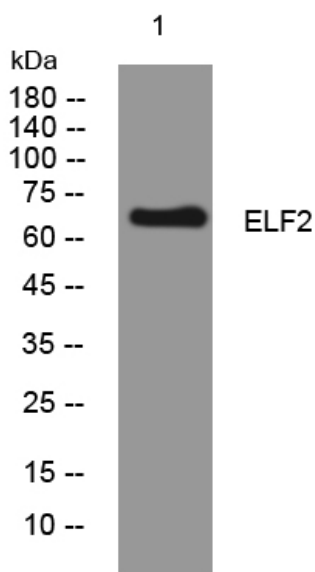
matters needing attention

Avoid repeated freezing and thawing!

Usage suggestions

This product can be used in immunological reaction related experiments. For more information, please consult technical personnel.

Products Images



Western blot analysis of lysates from Jarkat cells,
primary antibody was diluted at 1:1000, 4° over night