



S26A9 rabbit pAb

Catalog No	YP-Ab-08485
Isotype	IgG
Reactivity	Human; Mouse
Applications	WB
Gene Name	SLC26A9
Protein Name	S26A9
Immunogen	Synthesized peptide derived from human S26A9 AA range: 689-739
Specificity	This antibody detects endogenous levels of S26A9 at Human/Mouse
Formulation	Liquid in PBS containing 50% glycerol, 0.5% BSA and 0.02% sodium azide.
Source	Polyclonal, Rabbit,IgG
Purification	The antibody was affinity-purified from rabbit serum by affinity-chromatography using specific immunogen.
Dilution	WB 1: 500-2000
Concentration	1 mg/ml
Purity	≥90%
Storage Stability	-20°C/1 year
Synonyms	
Observed Band	
Cell Pathway	Cell membrane ; Multi-pass membrane protein .
Tissue Specificity	Predominantly expressed in lung at the luminal side of the bronchiolar and alveolar epithelium of lung. To a lower extent, also expressed in pancreas and prostate.
Function	function:DIDS- and thiosulfate- sensitive anion exchanger mediating chloride, sulfate and oxalate transport. Mediates chloride/bicarbonate exchange or chloride-independent bicarbonate extrusion thus assuring bicarbonate secretion. Inhibited by ammonium and thiosulfate.,sequence caution:Translated as stop.,similarity:Belongs to the SLC26A/SuIP transporter (TC 2.A.53) family.,similarity:Contains 1 STAS domain.,tissue specificity:Predominantly expressed in lung at the luminal side of the bronchiolar and alveolar epithelium of lung. To a lower extent, also espressed in pancreas and prostate.,
Background	This gene is one member of a family of sulfate/anion transporter genes. Family members are well conserved in their genomic (number and size of exons) and



protein (aa length among species) structures yet have markedly different tissue expression patterns. The product of this gene is a highly selective chloride ion channel regulated by WNK kinases. Alternative splicing results in multiple transcript variants encoding differing isoforms.[provided by RefSeq, Dec 2008],

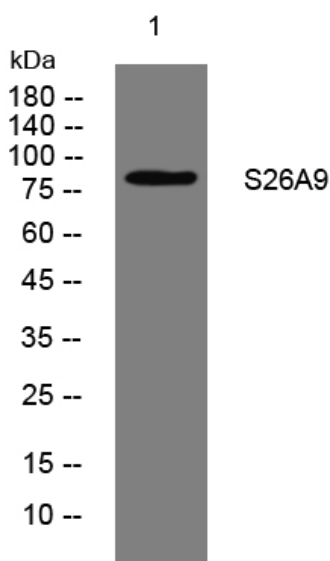
matters needing attention

Avoid repeated freezing and thawing!

Usage suggestions

This product can be used in immunological reaction related experiments. For more information, please consult technical personnel.

Products Images



Western blot analysis of lysates from K562 cells, primary antibody was diluted at 1:1000, 4° over night