



PCBP3 rabbit pAb

Catalog No	YP-Ab-08573
Isotype	IgG
Reactivity	Human; Mouse
Applications	WB
Gene Name	PCBP3
Protein Name	PCBP3
Immunogen	Synthesized peptide derived from human PCBP3 AA range: 63-113
Specificity	This antibody detects endogenous levels of PCBP3 at Human/Mouse
Formulation	Liquid in PBS containing 50% glycerol, 0.5% BSA and 0.02% sodium azide.
Source	Polyclonal, Rabbit,IgG
Purification	The antibody was affinity-purified from rabbit serum by affinity-chromatography using specific immunogen.
Dilution	WB 1: 500-2000
Concentration	1 mg/ml
Purity	≥90%
Storage Stability	-20°C/1 year
Synonyms	
Observed Band	
Cell Pathway	Cytoplasm .
Tissue Specificity	
Function	function:Single-stranded nucleic acid binding protein that binds preferentially to oligo dC.,similarity:Contains 3 KH domains.,
Background	This gene encodes a member of the KH-domain protein subfamily. Proteins of this subfamily, also referred to as alpha-CPs, bind to RNA with a specificity for C-rich pyrimidine regions. Alpha-CPs play important roles in post-transcriptional activities and have different cellular distributions. This gene's protein is found in the cytoplasm, yet it lacks the nuclear localization signals found in other subfamily members. Alternative splicing results in multiple transcript variants encoding distinct isoforms. [provided by RefSeq, Jul 2008],
matters needing attention	Avoid repeated freezing and thawing!

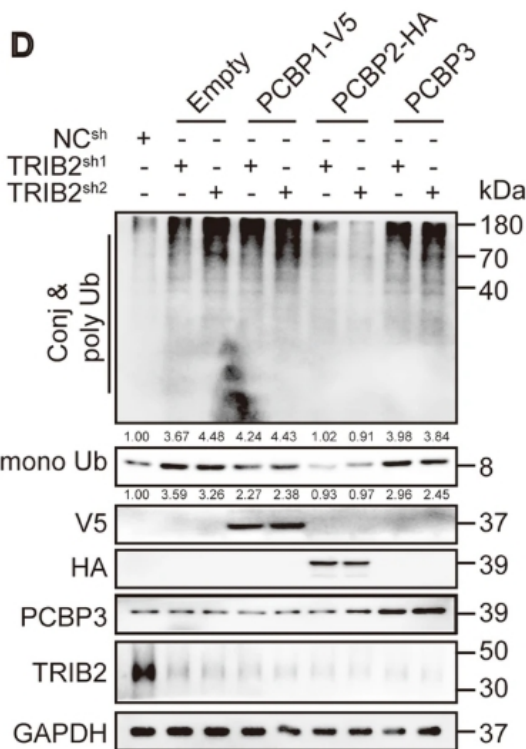


Usage suggestions

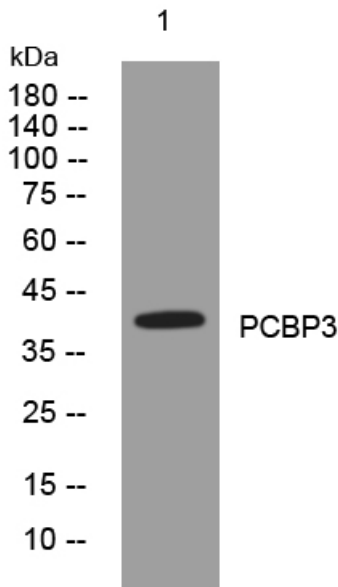
This product can be used in immunological reaction related experiments. For more information, please consult technical personnel.



Products Images



Guo, S., Chen, Y., Yang, Y. et al. TRIB2 modulates proteasome function to reduce ubiquitin stability and protect liver cancer cells against oxidative stress. *Cell Death Dis* 12, 42 (2021).



Western blot analysis of lysates from U2OS cells, primary antibody was diluted at 1:1000, 4° over night