



# NTCP2 rabbit pAb

<b>Catalog No</b>	YP-Ab-08575
<b>Isotype</b>	IgG
<b>Reactivity</b>	Human; Mouse;Rat
<b>Applications</b>	WB
<b>Gene Name</b>	SLC10A2 ASBT ISBT NTCP2
<b>Protein Name</b>	NTCP2
<b>Immunogen</b>	Synthesized peptide derived from human NTCP2 AA range: 46-96
<b>Specificity</b>	This antibody detects endogenous levels of NTCP2 at Human/Mouse/Rat
<b>Formulation</b>	Liquid in PBS containing 50% glycerol, 0.5% BSA and 0.02% sodium azide.
<b>Source</b>	Polyclonal, Rabbit,IgG
<b>Purification</b>	The antibody was affinity-purified from rabbit serum by affinity-chromatography using specific immunogen.
<b>Dilution</b>	WB 1: 500-2000
<b>Concentration</b>	1 mg/ml
<b>Purity</b>	≥90%
<b>Storage Stability</b>	-20°C/1 year
<b>Synonyms</b>	
<b>Observed Band</b>	
<b>Cell Pathway</b>	Membrane; Multi-pass membrane protein.
<b>Tissue Specificity</b>	
<b>Function</b>	disease:Defects in SLC10A2 are a cause of primary bile acid malabsorption (PBAM) [MIM:601295]. PBAM is an idiopathic intestinal disorder associated with congenital diarrhea, steatorrhea, interruption of the enterohepatic circulation of bile acids, and reduced plasma cholesterol levels.,function:Plays a critical role in the sodium-dependent reabsorption of bile acids from the lumen of the small intestine. Plays a key role in cholesterol metabolism.,similarity:Belongs to the sodium:bile acid symporter family.,subunit:Monomer and homodimer.,
<b>Background</b>	This gene encodes a sodium/bile acid cotransporter. This transporter is the primary mechanism for uptake of intestinal bile acids by apical cells in the distal ileum. Bile acids are the catabolic product of cholesterol metabolism, so this protein is also critical for cholesterol homeostasis. Mutations in this gene cause primary bile acid malabsorption (PBAM); muatations in this gene may also be associated with other diseases of the liver and intestines, such as familial hypertriglyceridemia (FHTG). [provided by RefSeq, Mar 2010],



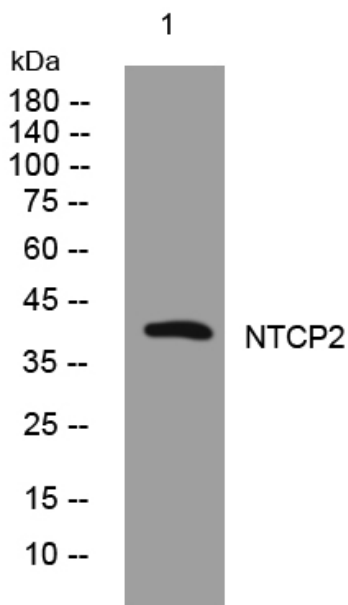
**matters needing attention**

Avoid repeated freezing and thawing!

**Usage suggestions**

This product can be used in immunological reaction related experiments. For more information, please consult technical personnel.

## Products Images



Western blot analysis of lysates from KB cells, primary antibody was diluted at 1:1000, 4°over night