

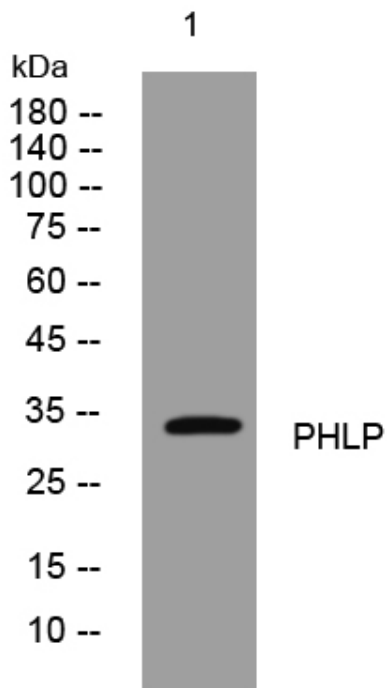


PHLP rabbit pAb

Catalog No	YP-Ab-08586
Isotype	IgG
Reactivity	Human; Mouse;Rat
Applications	WB
Gene Name	PDCL
Protein Name	PHLP
Immunogen	Synthesized peptide derived from human PHLP AA range: 18-68
Specificity	This antibody detects endogenous levels of PHLP at Human/Mouse/Rat
Formulation	Liquid in PBS containing 50% glycerol, 0.5% BSA and 0.02% sodium azide.
Source	Polyclonal, Rabbit,IgG
Purification	The antibody was affinity-purified from rabbit serum by affinity-chromatography using specific immunogen.
Dilution	WB 1: 500-2000
Concentration	1 mg/ml
Purity	≥90%
Storage Stability	-20°C/1 year
Synonyms	
Observed Band	
Cell Pathway	Cell projection, cilium .
Tissue Specificity	
Function	similarity:Belongs to the phosducin family.,subunit:Forms a complex with the beta and gamma subunits of the GTP-binding protein, transducin.,
Background	Phosducin-like protein is a putative modulator of heterotrimeric G proteins. The protein shares extensive amino acid sequence homology with phosducin, a phosphoprotein expressed in retina and pineal gland. Both phosducin-like protein and phosphoducin have been shown to regulate G-protein signaling by binding to the beta-gamma subunits of G proteins. [provided by RefSeq, Jul 2008],
matters needing attention	Avoid repeated freezing and thawing!
Usage suggestions	This product can be used in immunological reaction related experiments. For more information, please consult technical personnel.



Products Images



Western blot analysis of lysates from KB cells, primary antibody was diluted at 1:1000, 4° over night