

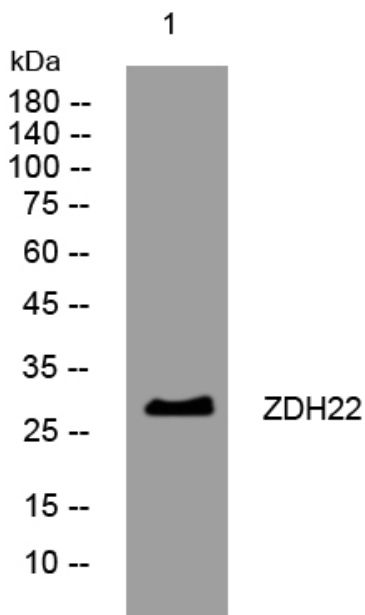


ZDH22 rabbit pAb

Catalog No	YP-Ab-08610
Isotype	IgG
Reactivity	Human; Mouse;Rat
Applications	WB
Gene Name	ZDHHC22 C14orf59
Protein Name	ZDH22
Immunogen	Synthesized peptide derived from human ZDH22 AA range: 21-71
Specificity	This antibody detects endogenous levels of ZDH22 at Human/Mouse/Rat
Formulation	Liquid in PBS containing 50% glycerol, 0.5% BSA and 0.02% sodium azide.
Source	Polyclonal, Rabbit,IgG
Purification	The antibody was affinity-purified from rabbit serum by affinity-chromatography using specific immunogen.
Dilution	WB 1: 500-2000
Concentration	1 mg/ml
Purity	≥90%
Storage Stability	-20°C/1 year
Synonyms	
Observed Band	
Cell Pathway	Endoplasmic reticulum membrane ; Multi-pass membrane protein . Golgi apparatus membrane ; Multi-pass membrane protein .
Tissue Specificity	Widely expressed.
Function	catalytic activity:Palmitoyl-CoA + protein-cysteine = S-palmitoyl protein + CoA.,domain:The DHHC domain is required for palmitoyltransferase activity.,similarity:Belongs to the DHHC palmitoyltransferase family.,similarity:Contains 1 DHHC-type zinc finger.,
Background	
matters needing attention	Avoid repeated freezing and thawing!
Usage suggestions	This product can be used in immunological reaction related experiments. For more information, please consult technical personnel.



Products Images



Western blot analysis of lysates from MDA-MB cells,
primary antibody was diluted at 1:1000, 4° over night