



MT1A rabbit pAb

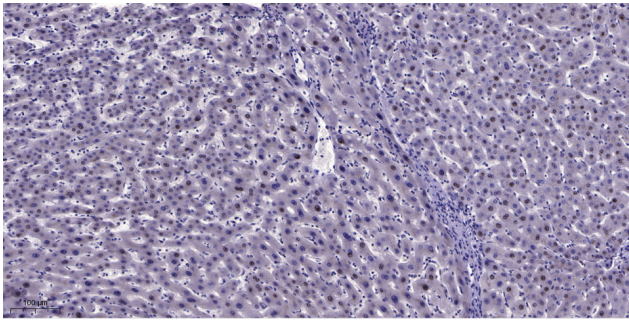
Catalog No	YP-Ab-08625
Isotype	IgG
Reactivity	Human;Rat;Mouse;
Applications	IHC;IF
Gene Name	MT1A MT1S
Protein Name	MT1A
Immunogen	Synthesized peptide derived from human MT1A AA range: 4-54
Specificity	This antibody detects endogenous levels of MT1A at Human
Formulation	Liquid in PBS containing 50% glycerol, 0.5% BSA and 0.02% sodium azide.
Source	Polyclonal, Rabbit,IgG
Purification	The antibody was affinity-purified from rabbit serum by affinity-chromatography using specific immunogen.
Dilution	IHC-p 1: 50-200. IF 1:50-200
Concentration	1 mg/ml
Purity	≥90%
Storage Stability	-20°C/1 year
Synonyms	
Observed Band	
Cell Pathway	nucleus,cytoplasm,cytosol,perinuclear region of cytoplasm,
Tissue Specificity	
Function	domain:Class I metallothioneins contain 2 metal-binding domains: four divalent ions are chelated within cluster A of the alpha domain and are coordinated via cysteinyl thiolate bridges to 11 cysteine ligands. Cluster B, the corresponding region within the beta domain, can ligate three divalent ions to 9 cysteines.,function:Metallothioneins have a high content of cysteine residues that bind various heavy metals.,function:Metallothioneins have a high content of cysteine residues that bind various heavy metals; these proteins are transcriptionally regulated by both heavy metals and glucocorticoids.,similarity:Belongs to the metallothionein superfamily. Type 1 family.,subunit:Monomer.,
Background	
matters needing attention	Avoid repeated freezing and thawing!



Usage suggestions

This product can be used in immunological reaction related experiments. For more information, please consult technical personnel.

Products Images



Immunohistochemical analysis of paraffin-embedded human liver cancer. 1, Antibody was diluted at 1:200(4° overnight). 2, Tris-EDTA,pH9.0 was used for antigen retrieval. 3,Secondary antibody was diluted at 1:200(room temperature, 45min).