

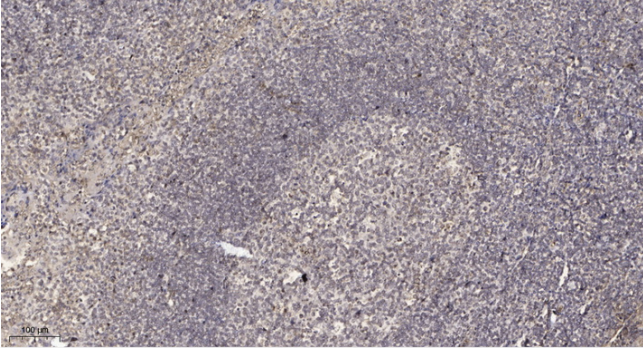


## DB123 rabbit pAb

<b>Catalog No</b>	YP-Ab-08501
<b>Isotype</b>	IgG
<b>Reactivity</b>	Human;Rat;Mouse;
<b>Applications</b>	IHC;IF
<b>Gene Name</b>	DEFB123 DEFB23 UNQ1963/PRO4485
<b>Protein Name</b>	DB123
<b>Immunogen</b>	Synthesized peptide derived from human DB123 AA range: 1-51
<b>Specificity</b>	This antibody detects endogenous levels of DB123 at Human
<b>Formulation</b>	Liquid in PBS containing 50% glycerol, 0.5% BSA and 0.02% sodium azide.
<b>Source</b>	Polyclonal, Rabbit,IgG
<b>Purification</b>	The antibody was affinity-purified from rabbit serum by affinity-chromatography using specific immunogen.
<b>Dilution</b>	IHC-p 1: 50-200. IF 1:50-200
<b>Concentration</b>	1 mg/ml
<b>Purity</b>	≥90%
<b>Storage Stability</b>	-20°C/1 year
<b>Synonyms</b>	
<b>Observed Band</b>	
<b>Cell Pathway</b>	Secreted .
<b>Tissue Specificity</b>	Abundant expression in the male reproductive tract only. Abundant expressed in testis and the caput region of epididymis, but low in the corpus region.
<b>Function</b>	function:Has antibacterial activity .,similarity:Belongs to the beta-defensin family.,
<b>Background</b>	Defensins are cysteine-rich cationic polypeptides that are important in the host immunologic response to invading microorganisms. This antimicrobial protein is secreted and is a member of the beta defensin protein family. Beta defensin genes are found in several clusters throughout the genome, with this gene mapping to a cluster at 20q11.1. Two transcript variants, one protein-coding and the other not, have been found for this gene. [provided by RefSeq, Nov 2014],
<b>matters needing attention</b>	Avoid repeated freezing and thawing!
<b>Usage suggestions</b>	This product can be used in immunological reaction related experiments. For more information, please consult technical personnel.



## Products Images



Immunohistochemical analysis of paraffin-embedded human tonsil. 1, Antibody was diluted at 1:200(4° overnight). 2, Tris-EDTA,pH9.0 was used for antigen retrieval. 3,Secondary antibody was diluted at 1:200(room temperature, 30min).