



IPYR rabbit pAb

Catalog No	YP-Ab-08504
Isotype	IgG
Reactivity	Human; Mouse
Applications	WB
Gene Name	PPA1 IOPPP PP
Protein Name	IPYR
Immunogen	Synthesized peptide derived from human IPYR AA range: 162-212
Specificity	This antibody detects endogenous levels of IPYR at Human/Mouse
Formulation	Liquid in PBS containing 50% glycerol, 0.5% BSA and 0.02% sodium azide.
Source	Polyclonal, Rabbit,IgG
Purification	The antibody was affinity-purified from rabbit serum by affinity-chromatography using specific immunogen.
Dilution	WB 1: 500-2000
Concentration	1 mg/ml
Purity	≥90%
Storage Stability	-20°C/1 year
Synonyms	
Observed Band	
Cell Pathway	Cytoplasm .
Tissue Specificity	Expressed ubiquitously.
Function	catalytic activity:Diphosphate + H(2)O = 2 phosphate.,cofactor:Binds 4 magnesium ions per subunit. Other metal ions can support activity, but at a lower rate. Two magnesium ions are required for the activation of the enzyme and are present before substrate binds, two additional magnesium ions form complexes with substrate and product.,similarity:Belongs to the PPase family.,subunit:Homodimer.,tissue specificity:Expressed ubiquitously.,
Background	The protein encoded by this gene is a member of the inorganic pyrophosphatase (PPase) family. PPases catalyze the hydrolysis of pyrophosphate to inorganic phosphate, which is important for the phosphate metabolism of cells. Studies of a similar protein in bovine suggested a cytoplasmic localization of this enzyme. [provided by RefSeq, Jul 2008],



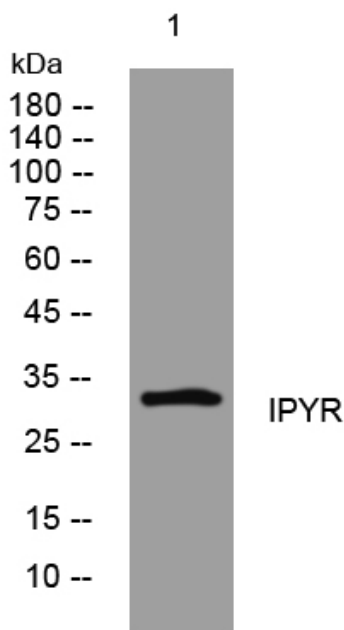
matters needing attention

Avoid repeated freezing and thawing!

Usage suggestions

This product can be used in immunological reaction related experiments. For more information, please consult technical personnel.

Products Images



Western blot analysis of lysates from DU145 cells, primary antibody was diluted at 1:1000, 4° over night