



# CASQ1 rabbit pAb

<b>Catalog No</b>	YP-Ab-08511
<b>Isotype</b>	IgG
<b>Reactivity</b>	Human; Mouse;Rat
<b>Applications</b>	WB
<b>Gene Name</b>	CASQ1 CASQ
<b>Protein Name</b>	CASQ1
<b>Immunogen</b>	Synthesized peptide derived from human CASQ1 AA range: 322-372
<b>Specificity</b>	This antibody detects endogenous levels of CASQ1 at Human/Mouse/Rat
<b>Formulation</b>	Liquid in PBS containing 50% glycerol, 0.5% BSA and 0.02% sodium azide.
<b>Source</b>	Polyclonal, Rabbit,IgG
<b>Purification</b>	The antibody was affinity-purified from rabbit serum by affinity-chromatography using specific immunogen.
<b>Dilution</b>	WB 1: 500-2000
<b>Concentration</b>	1 mg/ml
<b>Purity</b>	≥90%
<b>Storage Stability</b>	-20°C/1 year
<b>Synonyms</b>	
<b>Observed Band</b>	
<b>Cell Pathway</b>	Endoplasmic reticulum . Sarcoplasmic reticulum . Sarcoplasmic reticulum lumen . Sarcoplasmic reticulum membrane; Peripheral membrane protein; Luminal side . Mitochondrion matrix . This isoform of calsequestrin occurs in the sarcoplasmic reticulum's terminal cisternae luminal spaces of fast skeletal muscle cells. Preferentially forms linear and round aggregates in the endoplasmic reticulum (ER) of resting cells (PubMed:28895244). In a minority of cells, homogeneously detected in the ER lumen (PubMed:28895244). Colocalizes with STIM1 at endoplasmic reticulum in response to a depletion of intracellular calcium (PubMed:27185316). .
<b>Tissue Specificity</b>	Expressed in myoblasts (at protein level).
<b>Function</b>	function:Calsequestrin is a high-capacity, moderate affinity, calcium-binding protein and thus acts as an internal calcium store in muscle. The release of calcium bound to calsequestrin through a calcium release channel triggers muscle contraction.,function:Calsequestrin is a high-capacity, moderate affinity, calcium-binding protein and thus acts as an internal calcium store in muscle. The release of calcium bound to calsequestrin through a calcium release channel triggers muscle contraction. Binds 40 to 50 moles of calcium. Also binds laminin.,online information:Calsequestrin entry,similarity:Belongs to the calsequestrin family.,subcellular location:This isoform of calsequestrin occurs in



the sarcoplasmic reticulum's terminal cisternae luminal spaces of fast skeletal muscle cells. Also mitochondrial according to PubMed:7945294.,

**Background**

This gene encodes the skeletal muscle specific member of the calsequestrin protein family. Calsequestrin functions as a luminal sarcoplasmic reticulum calcium sensor in both cardiac and skeletal muscle cells. This protein, also known as calmitine, functions as a calcium regulator in the mitochondria of skeletal muscle. This protein is absent in patients with Duchenne and Becker types of muscular dystrophy. [provided by RefSeq, Jun 2013],

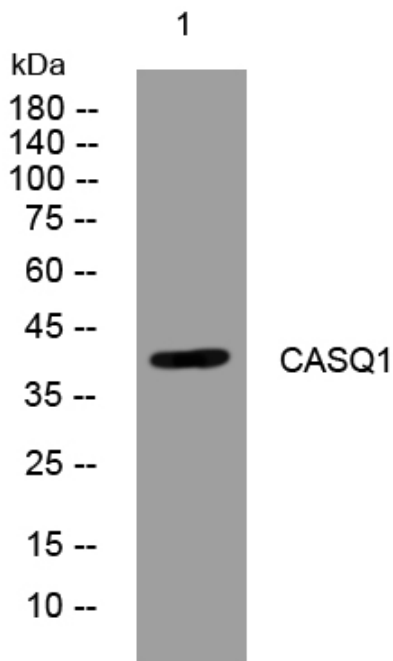
**matters needing attention**

Avoid repeated freezing and thawing!

**Usage suggestions**

This product can be used in immunological reaction related experiments. For more information, please consult technical personnel.

**Products Images**



Western blot analysis of lysates from THP-1 cells, primary antibody was diluted at 1:1000, 4° over night