

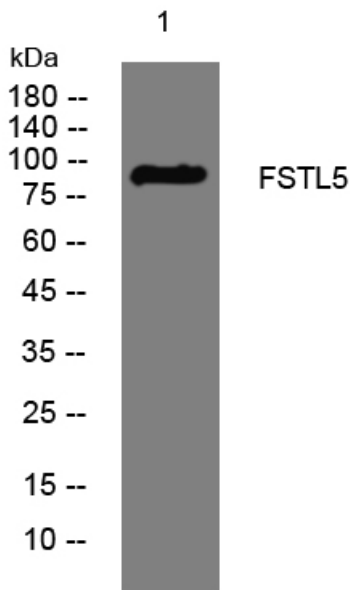


FSTL5 rabbit pAb

Catalog No	YP-Ab-08517
Isotype	IgG
Reactivity	Human; Mouse
Applications	WB
Gene Name	FSTL5 KIAA1263
Protein Name	FSTL5
Immunogen	Synthesized peptide derived from human FSTL5 AA range: 315-365
Specificity	This antibody detects endogenous levels of FSTL5 at Human/Mouse
Formulation	Liquid in PBS containing 50% glycerol, 0.5% BSA and 0.02% sodium azide.
Source	Polyclonal, Rabbit,IgG
Purification	The antibody was affinity-purified from rabbit serum by affinity-chromatography using specific immunogen.
Dilution	WB 1: 500-2000
Concentration	1 mg/ml
Purity	≥90%
Storage Stability	-20°C/1 year
Synonyms	
Observed Band	
Cell Pathway	Secreted .
Tissue Specificity	
Function	similarity:Contains 1 Kazal-like domain.,similarity:Contains 2 EF-hand domains.,similarity:Contains 2 Ig-like (immunoglobulin-like) domains.,
Background	
matters needing attention	Avoid repeated freezing and thawing!
Usage suggestions	This product can be used in immunological reaction related experiments. For more information, please consult technical personnel.



Products Images



Western blot analysis of lysates from HeLa cells,
primary antibody was diluted at 1:1000, 4° over night